

520

Changes in force; C 1, C 2, C 3, C 4, and 5

TM 9-1005-249-34

CHANGE 5

CHANGE)
)
NO. 5)

EXTRA

HEADQUARTERS
DEPARTMENT OF THE ARMY
WASHINGTON, DC, 16 April 1976

Direct Support and General Support Maintenance
Including Repair Parts and Special Tools List
(Including Depot Maintenance Repair Parts and Special Tools)

RIFLE, 5.56-MM, M16

(1005-00-856-6885)

RIFLE, 5.56-MM, M16A1, W/E

(1005-00-073-9421)

AND

BIPOD, RIFLE, M3, W/CARRYING CASE

(1005-00-890-2609)

Current as of 31 December 1975

TM 9-1005-249-34, 6 February 1974, is changed as follows:

Appendix B is superseded as follows:

DIRECT SUPPORT AND GENERAL SUPPORT MAINTENANCE REPAIR PARTS AND SPECIAL TOOLS LIST (INCLUDING DEPOT MAINTENANCE REPAIR PARTS AND SPECIAL TOOLS)

SECTION I. INTRODUCTION

B-1. Scope

This appendix lists repair parts; special tools; test, measurement, and diagnostic equipment (TMDE); and other support equipment required for the performance of direct support and general support maintenance of the 5.56-mm rifle, M16 and Rifle Bipod, M3.

B-2. General

This repair parts and special tools list is divided into the following sections:

a. Section II. Repair Parts List. A list of repair parts authorized for use in the performance of maintenance. The list also includes parts which must be removed for replacement of the authorized parts. Parts lists are composed of functional groups in ascending numerical sequence, with the parts in each group listed in figure and item number sequence. Bulk materials are listed in NSN sequence.

b. Section III. Special Tools List. A list of special tools, TMDE, and support equipment authorized for the performance of Maintenance.

c. Section IV. National Stock Number (NSN) and Part Number Index. A list, in ascending numerical sequence of the National Item Identification Number (NIIN), of all National stock numbers appearing in the listings, followed by a list, in alphameric sequence, of all part numbers appearing in the listings. National stock numbers and part numbers are cross-referenced to each illustration figure and item number appearance. This index is followed by a cross-reference list of reference designations to figure and item numbers when applicable.

B-3. Explanation of Columns

The following provides an explanation of columns found in the tabular listings:

a. Illustration. This column is divided as follows:

(1) *Figure number.* Indicates the figure number of the illustration in which the item is shown.

(2) *Item number.* The number used to identify each item called out in the illustration.

b. Source, Maintenance, and Recoverability Codes (SMR).

(1) **Source code.** Source codes are assigned to support items to indicate the manner of acquiring support items for maintenance, repair, or overhaul of end items. Source codes are entered in the first and second positions of the Uniform SMR Code format as follows:

Code Definition

PA Item procured and stocked for anticipated or known usage.

PB Item procured and stocked for insurance purposes because essentiality dictates that a minimum quantity be available in the supply system.

PC Item procured and stocked and which otherwise would be coded PA except that it is deteriorative in nature.

PD Support item, excluding support equipment, procured for initial issue or outfitting and stocked only for subsequent or additional initial issues or outfittings. Not subject to automatic replenishment.

PE Support equipment procured and stocked for initial issue or outfitting to specified maintenance repair activities.

PF Support equipment which will not be stocked but which will be centrally procured on demand.

Code Definition

PG Item procured and stocked to provide for sustained support for the life of the equipment. It is applied to an item peculiar to the equipment which, because of probable discontinuance or shutdown of production facilities, would prove uneconomical to reproduce at a later time.

KD An item of a depot overhaul/repair kit and not purchased separately. Depot kit defined as a kit that provides items required at the time of overhaul or repair.

KF An item of a maintenance kit and not purchased separately. Maintenance kit defined as a kit that provides an item that can be replaced at organizational or intermediate levels of maintenance.

KB Item included in both a depot overhaul/repair kit and a maintenance kit.

MO Item to be manufactured or fabricated at organizational level.

MF Item to be manufactured or fabricated at the direct support maintenance level.

MH Item to be manufactured or fabricated at the general support maintenance level.

MD Item to be manufactured or fabricated at the depot maintenance level.

Code	Definition
AO	Item to be assembled at organizational level.
AF	Item to be assembled at direct support maintenance level.
AH	Item to be assembled at general support maintenance level.
AD	Item to be assembled at depot maintenance level.
XA	Item is not procured or stocked because the requirements for the item will result in the replacement of the next higher assembly.
XB	Item is not procured or stocked. If not available through salvage, requisition.
XD	A support item that is not stocked. When required, item will be procured through normal supply channels.

NOTE

Cannibalization or salvage may be used as a source of supply for any item source coded above, except those coded XA, XD, and aircraft support items as restricted by AR 700-42.

(2) **Maintenance code.** Maintenance codes are assigned to indicate the levels of maintenance authorized to USE and REPAIR support items. The maintenance codes are entered in the third and fourth positions of the Uniform SMR Code format as follows:

(a) The maintenance code entered in the third position will indicate the lowest maintenance level authorized to remove, replace, and use the support item. The maintenance code entered in the third position will indicate one of the following levels of maintenance:

Code	Application/ explanation
C	Crew or operator maintenance performed within organizational maintenance.
O	Support item is removed, replaced, used at the organizational level.
I	Support item is removed, replaced, used by the direct support element of integrated direct support maintenance.
F	Support item is removed, replaced, used at the direct support level.
H	Support item is removed, replaced, used at the general support level.
D	Support items that are removed, replaced, used at depot, mobile depot, specialized repair activity only.

NOTE

Codes "I" and "F" will be considered the same by direct support units.

(b) The maintenance code entered in the fourth position indicates whether the item is to be

repaired and identifies the lowest maintenance level with the capability to perform complete repair (i.e., all authorized maintenance functions). This position will contain one of the following maintenance codes:

Code	Application/ explanation
O	The lowest maintenance level capable of complete repair of the support item is the organizational level.
F	The lowest maintenance level capable of complete repair of the support item is the direct support level.
H	The lowest maintenance level capable of complete repair of the support item is the general support level.
D	The lowest maintenance level capable of complete repair of the support item is the depot level, performed by (enter applicable activity) depot, mobile depot, or specialized repair activity.
L	Repair restricted to designated specialized repair activity.
Z	Nonreparable. No repair is authorized.
B	No repair is authorized. The item may be reconditioned by adjusting, lubrication, etc, at the user level. No parts or special tools are procured for the maintenance of this item.

(3) Recoverability code. Recoverability codes are assigned to support items to indicate the disposition action on unserviceable items. The recoverability code is entered in the fifth position of the Uniform SMR Code format as follows:

Recoverability code	Definition
Z	Nonreparable item. When unserviceable, condemn and dispose at the level indicated in position 3.
O	Reparable item. When uneconomically repairable, condemn and dispose at organizational level.
F	Reparable item. When uneconomically repairable, condemn and dispose at the direct support level.
H	Reparable item. When uneconomically repairable, condemn and dispose at the general support level.
D	Reparable item. When beyond lower level repair capability, return to depot. Condemnation and disposal not authorized below depot level.
L	Reparable item. Repair, condemnation, and disposal not authorized below depot/specialized repair activity level.
A	Item requires special handling or condemnation procedures because of specific reasons (i.e., precious metal content, high dollar value, critical material, or hazardous material). Refer to appropriate manuals/directives for specific instructions.

c. National Stock Number (NSN). Indicates the National stock number assigned to the item and will be used for requisitioning purposes.

d. Part Number. Indicates the primary number used by the manufacturer (individual, company, firm, corporation, or Government activity), which controls the design and characteristics of the item by means of its engineering drawings, specifications, standards, and inspection requirements, to identify an item or range of items.

NOTE

When a stock numbered item is requisitioned, the repair part received may have a different part number than the part being replaced.

e. Federal Supply Code for Manufacturer (FSCM). The FSCM is a five-digit numeric code listed in SB 708-42 which is used to identify the manufacturer, distributor, or Government agency, etc.

f. Description. Indicates the Federal item name and, if required, a minimum description to identify the item. Items that are included in kits and sets are listed below the name of the kit or set with the quantity of each item in the kit or set indicated in the quantity incorporated in unit column. When the part to be used differs between serial numbers of the same model, the effective serial numbers are shown as the last line of the description. In the special tools list, the initial basis of issue (BOI) appears as the last line in the entry for each special tool, TMDE, and support equipment. When the

density of the equipments supported exceeds density spread indicated in the basis of issue, the total authorization is increased accordingly.

g. Unit of Measure (U/M). Indicates the standard or the basic quantity of the listed item as used in performing the actual maintenance function. This measure is expressed by a two-character alphabetical abbreviation (e.g., ea, in., pr, etc). When the unit of measure differs from the unit of issue, the lowest unit of issue that will satisfy the required units of measure will be requisitioned.

h. Quantity Incorporated in Unit. Indicates the quantity of the item used in the breakout shown on the illustration figure, which is prepared for a functional group, subfunctional group, or an assembly. A "V" appearing in this column in lieu of a quantity indicates that no specific quantity is applicable (e.g., shims, spacers, etc).

B-4. Special Information

a. Detailed manufacturing instructions for items source coded to be manufactured or fabricated are found in Chapter 3. Bulk materials required to manufacture items are listed in the Bulk Material Group in section II of this appendix.

b. Detailed assembly instructions for items source coded to be assembled are found in Chapter 3.

c. Repair parts kits and gasket sets appear as the last entries in the repair parts listing for the figure in which its parts are listed as repair parts.

d. Action change codes indicated in the left-hand margin of the listing page denote the following:

- N Indicates an added item
- C Indicates a change in data
- R Indicates a change in NSN only

e. Usable on codes are shown in the description column. Uncoded items are applicable to all models. Identification of the usable on codes used in this publication are:

Code	Used on
194 ...	5.56-mm rifle, M16
755 ...	5.56-mm rifle, M16A1

B-5. How to Locate Repair Parts

a. When National Stock Number or Part Number is Unknown:

(1) *First.* Using the table of contents determine the functional group within which the repair part belongs. This is necessary since illustrations are prepared for functional groups and listings are divided into the same groups.

(2) *Second.* Find the illustration covering the functional group to which the repair part belongs.

(3) *Third.* Identify the repair part on the illustration and note the illustration figure and item number of the repair part.

(4) *Fourth.* Using the repair parts listing, find the figure and item number noted on the illustration.

b. When National Stock Number or Part Number is Known:

(1) *First.* Using the index of National stock numbers and part numbers, find the pertinent National stock number or part number. This index is in ascending NIIN (the last nine figures of the NSN) sequence followed by a list of part numbers in ascending alphanumeric sequence, cross-referenced to the illustration figure number and item number.

(2) *Second.* After finding the figure and item number, locate the figure and item number in the repair parts list.

B-6. Abbreviations

Abbreviation	Explanation
adj	adjustable
blk	black
bx	box
cap	capacity
crs	corrosion-resistant steel
diam	diameter
dld-f-lkg ...	drilled for locking
fl-ext-T	flat external teeth
fil-hd	fillister head
fin	finish
h	height
HD	hundred
id	inside diameter
lg	long
lh	left-hand
loa	length overall
max	maximum
nom	nominal
oa	overall
od	outside diameter
oz	ounce
pass-fin	passivated-finish
phos-ctd	phosphate-coated
plstc	plastic
rh	right-hand
stl	steel
thk	thick
w	width

Section II. REPAIR PARTS LIST

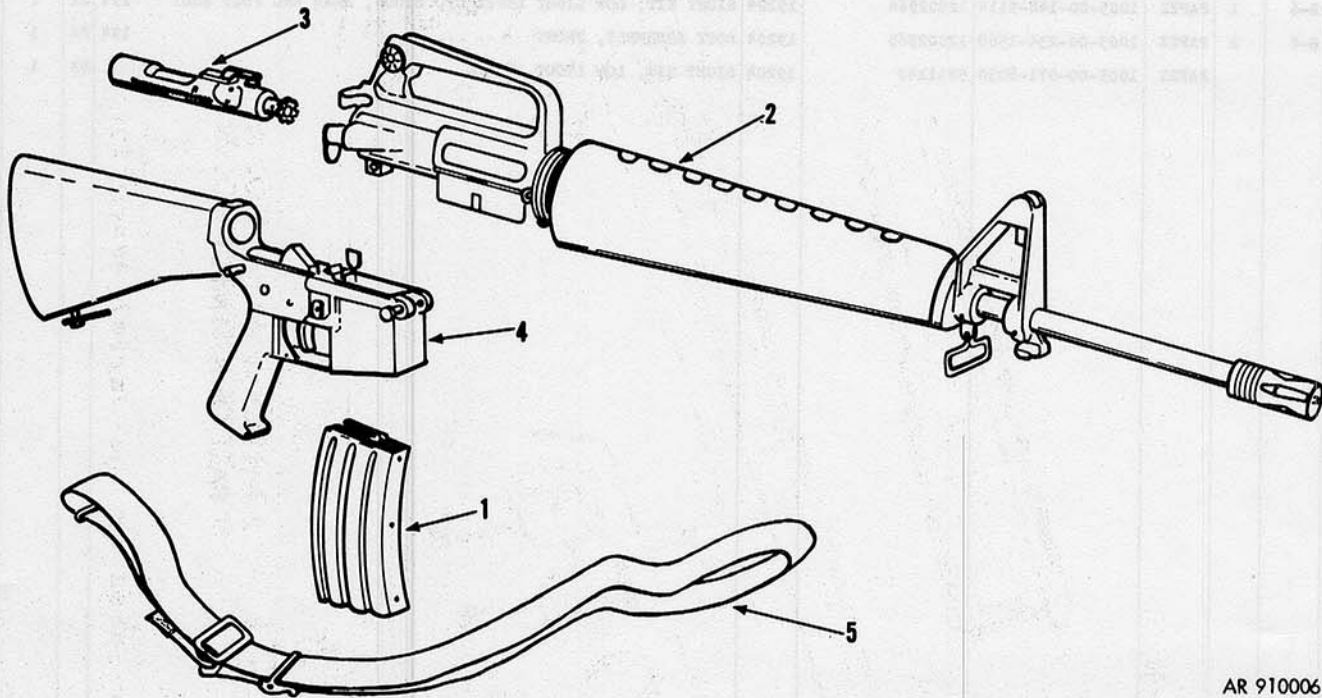
(1) ILLUSTRATION		(2)	(3)	(4)	(5)	(6)	(7)	(8)
(a) FIG NO.	(b) ITEM NO.	SMR CODE	FEDERAL STOCK NUMBER	PART NUMBER	FSCM	DESCRIPTION	USABLE ON CODE	QTY INC IN UNIT
						GROUP: 00 RIFLE, 5.56-MM, M16 AND M16A1		
N	B-1	1 PACZZ	1005-00-921-5004	8448670	19204	MAGAZINE ASSEMBLY (30 CARTRIDGE CAPACITY)		EA 1
N	B-1	2 XA		8448578	19204	LOWER RECEIVER AND BUTTSTOCK ASSY	194	EA 1
N	B-1	3 XA		8448501	19204	BOLT CARRIER GROUP	194	EA 1
N	B-1	4 XA		7448522	19204	UPPER RECEIVER AND BARREL ASSEMBLY	194	EA 1
	B-1	5 PAOZZ	1005-00-714-9749	7149749	19204	SLING, SMALL ARM		EA 1
						GROUP: 01 UPPER RECEIVER AND BARREL ASSY		
N	B-2	1 PAOZZ	1005-00-017-9546	8448517	19204	HANDLE, CHARGING BOLT CARRIER	194	EA 1
N	B-2	2 PAFZZ	5315-00-282-3642	MS16562-96	96906	PIN, SPRING TUBULAR, SLOTTED, S, PHOS-CTD, 1/16 NOM DIA, 1/4 LG		EA 1
N	B-2	3 PAFZZ	1005-00-999-0405	8448519	19204	LATCH, CHARGING HANDLE		EA 1
N	B-2	4 PAFZZ	5360-00-999-0404	8448520	19204	SPRING, CHARGING HANDLE LATCH		EA 1
N	B-2	5 XA		8448518	19204	HANDLE		EA 1
N	B-2	6 PAOFF	1005-00-056-2252	8448561	19204	GUARD, HAND GUN, RH, BLK		EA 1
N	B-2	7 PAOFF	1005-00-056-2251	8448557	19204	GUARD, HAND GUN LH, BLK		EA 1
N	B-2	8 PAFZZ	1005-00-933-8089	8448576	19204	SUPPRESSOR, FLASH STL, PHOS-CTD, 1.750 O/A LG, 0.864 DIA		EA 1
N	B-2	9 PAFZZ	1005-00-992-7280	8448577	19204	WASHER, LOCK, FLASH SUPPRESSOR UPPER RECEIVER		EA 1
N	B-2	10 PAFZZ	1005-00-152-3441	8448663	19204	BARREL ASSEMBLY, RIFLE STL, 20.36 LOA, 6 GROOVES		EA 1
N	B-2	11 PAFZZ	1005-00-979-3926	8448575	19204	PIN, FRONT SIGHT, TAPERED		EA 2
N	B-2	12 PAFZZ	1005-00-979-3924	8448564	19204	CAP, HAND GUARD		EA 1
N	B-2	13 PAFZZ	5315-00-058-6044	MS16562-106	96906	PIN, SPRING TUBULAR, SLOTTED, S, PHOS-CTD, 5/64 NOM DIA, 5/16 LG		EA 1
N	B-2	14 PAFZZ	1005-00-978-1038	8448567	19204	TUBE, GAS		EA 1
N	B-2	15 PAFZZ	5320-00-055-3066	MS16535-125	96906	RIVET, TUBULAR		EA 1
N	B-2	16 PAOZZ	1005-00-017-9543	8448571	19204	SWIVEL, GUN SLING UPPER AND LOWER RECEIVER		EA 1
N	B-2	17 PAFZZ	1005-00-979-3929	8448572	19204	POST, FRONT SIGHT		EA 1
N	B-2	18 PAFZZ	1005-00-979-3930	8448573	19204	DETENT, FRONT SIGHT		EA 1
N	B-2	19 PAFZZ	5360-00-979-3931	8448574	19204	SPRING, FRONT SIGHT DETENT		EA 1
N	B-2	20 XA		8448566	19204	SIGHT, FRONT		EA 1
N	B-2	21 XA		8448548	19204	BARREL ASSEMBLY		EA 1
N	B-2	22 XA		8448552	19204	NUT, BARREL ASSEMBLY		EA 1
N	B-2	23 PAFZZ	5365-00-999-0863	8448665	19204	RING, RETAINING EXT, TAPERED SECTION TYPE, S, PHOS-CTD, 1.272 FREE ID		EA 1
N	B-2	24 PAFZZ	1005-00-978-1036	8448555	19204	SPRING, SLIP RING, HAND GUARD		EA 1
N	B-2	25 PAFZZ	1005-00-978-1034	8448553	19204	NUT, BARREL		EA 1
N	B-2	26 PAFZZ	1005-00-978-1035	8448554	19204	RING, SLIP, HAND GUARD		EA 1
N	B-2	27 PAFZZ	1005-00-978-1023	8448533	19204	PIN, EJECTION PORT COVER		EA 1
N	B-2	28 PAFZZ	5365-00-999-0864	MS16632-3012	96906	RING, RETAINING EXT, REDUCED SECTION TYPE, S, PHOS-CTD, 0.102 FREE ID		EA 1
N	B-2	29 PAFZZ	5360-00-978-1025	8448532	19204	SPRING, EJECTION PORT COVER		EA 1
N	B-2	30 PAFZ	1005-00-978-1022	8448525	19204	COVER, EJECTION PORT		EA 1

(1) ILLUSTRATION		(2)	(3)	(4)	(5)	(6)	(7)	(8)
(a) FIG NO.	(b) ITEM NO.	SMF CODE	FEDERAL STOCK NUMBER	PART NUMBER	FSCM	DESCRIPTION	U/M	QTY INC IN UNIT
						USABLE ON CODE		
N	B-2	31	PAFZZ 5315-00-282-3642	MS16562-96	96906	PIN, SPRING TUBULAR, SLOTTED, S, PHOS-CTD, 1/16 NOM DIA, 1/4 LG 755	EA	1
N	B-2	32	PAFZZ 1005-00-978-1029	8448535	19204	DRUM, REAR SIGHT WINDAGE	EA	1
N	B-2	33	PAFZZ 1005-00-978-1030	8448537	19204	DETENT, REAR SIGHT	EA	1
N	B-2	34	PAFZZ 5360-00-978-1032	8448538	19204	SPRING, DETENT, REAR SIGHT	EA	1
N	B-2	35	PAFZZ 1005-00-978-1028	8448534	19204	SCREW, REAR SIGHT WINDAGE	EA	1
N	B-2	36	PAFZZ 1005-00-978-1026	8448539	19204	APERTURE, SIGHT STL, PHOS-CTD, 0.609 LOA, 0.317 W, 0.080 DIA APERTURE	EA	1
N	B-2	37	PAFZZ 5360-00-978-1027	8448536	19204	SPRING, REAR SIGHT	EA	1
N	B-2	38	PAFZZ 5315-00-840-3812	MS16562-121	96906	PIN, SPRING TUBULAR, SLOTTED, S, PHOS-CTD, 3/32 NOM DIA, 5/8 LG	EA	1
N	B-2	39	XA	8448541	19204	FORWARD, ASSIST ASSEMBLY	194 EA	1
N	B-2	40	PAFZZ 5360-00-017-9541	8448540	19204	SPRING, HELICAL, COMPRESSION UPPER RECEIVER	EA	1
N	B-2	41	PAFZZ 5315-00-282-3642	MS16562-96	96906	PIN, SPRING TUBULAR, SLOTTED, S, PHOS-CTD, 1/16 NOM DIA, 1/4 LG 194	EA	1
N	B-2	42	PAFZZ 1005-00-017-9539	8448543	19204	PAWL, FORWARD ASSIST UPPER RECEIVER	194 EA	1
N	B-2	43	PAFZZ 1005-00-017-9540	8448544	19204	DETENT, PAWL UPPER RECEIVER	194 EA	3
N	B-2	44	PAFZZ 5360-00-523-8084	8448542	19204	SPRING, BOLT	194 EA	1
N	B-2	45	PAFZZ 1005-00-017-9538	8448545	19204	PLUNGER ASSEMBLY	194 EA	1
N	B-2	46	PAFZZ 1005-00-017-9550	8448603	19204	RECEIVER, UPPER	755 EA	1
						GROUP: 02 BOLT CARRIER ASSEMBLY		
N	B-3	1	PAOZZ 5315-00-999-1509	8448504	19204	PIN, FIRING PIN RETAINING	EA	1
N	B-3	2	PAOZZ 1005-00-017-9547	8448503	19204	PIN FIRING BOLT CARRIER	EA	1
N	B-3	3	PAOZZ 1005-00-992-7294	8448502	19204	PIN, BOLT CAM	EA	1
N	B-3	4	PAFZZ 1005-00-992-7285	8448509	19204	BOLT ASSEMBLY	EA	1
N	B-3	5	PAOZZ 1005-00-992-7290	8448513	19204	PIN, EXTRACTOR	EA	1
N	B-3	6	PAOZZ 1005-00-992-7288	8448512	19204	EXTRACTOR, SMALL ARMS CARTRIDGE	EA	1
N	B-3	7	PAOZZ 1005-00-760-3768	8448755	19204	SPRING ASSEMBLY, EXTRACTOR	EA	1
N	B-3	8	PAOZZ 5315-00-514-2358	MS16562-99	96906	PIN, SPRING TUBULAR, SLOTTED, S, PHOS-CTD, 1/16 NOM DIA, 7/16 LG	HD	1
N	B-3	9	PAOZZ 1005-00-992-7291	8449515	19204	EJECTOR, CARTRIDGE STL, PHOS-CTD, 0.475 LOA, 0.106 DIA	EA	1
N	B-3	10	PAOZZ 5360-00-992-7292	8448516	19204	SPRING, EJECTOR AND SELECTOR LEVER DETENT	194 EA	1
N	B-3	11	PAFZZ 1005-00-992-7287	8448511	19204	RING, BOLT	EA	3
N	B-3	12	XA	8448510	19204	BOLT	EA	1
N	B-3	13	AF FFF	8448505	19204	CARRIER AND KEY, BOLT CARRIER	194 EA	1
N	B-3	14	PAFZZ 1005-00-992-7284	8448508	19204	SCREW, CARRIER AND KEY	EA	2
N	B-3	15	PAFZZ 1005-00-992-7283	8448506	19204	KEY, BOLT CARRIER	EA	1
N	B-3	16	PAFZZ 1005-00-738-6213	8448507	19204	CARRIER, BOLT	194 EA	1
						GROUP: 03 LOWER RECEIVER AND BUTTSTOCK ASSY		
N	B-4	1	PAUZZ 5305-00-912-7296	MS35276-284	96906	SCREW, MACHINE FIL-HD, DLD-F-LKG WIRE, CRES, PASS-FIN, 1/4-28NF- 2A, 1-1/4 LG	EA	1
N	B-4	2	PAOZZ 5310-00-527-3634	MS35335-61	96906	WASHER, LOCK FET-EXT-TEETH, S, PASS-FIN., 1/4 NOM SIZE, 0.267 MAX ID, 0.510 MAX OD, 0.028 MAX THK	EA	1
N	B-4	3	PAOZZ 1005-00-056-2250	8448632	19204	GRIP, RIFLE PLSTC, BLACK, 3.879 LOA, 3.386 W	194 EA	1

(1)		(2)	(3)	(4)	(5)	(6)	(7)	(8)
ILLUSTRATION		SMR CODE	FEDERAL STOCK NUMBER	PART NUMBER	FSCM	DESCRIPTION	U/M	QTY INC IN UNIT
(a) FIG NO.	(b) ITEM NO.							
N	B-4	4	PAOZZ	5360-00-992-7292	8448516	19204	SPRING EJECTOR AND SELECTOR LEVER DETENT	EA 1
N	B-4	5	PAOZZ	1005-00-992-6667	8448631	19204	DETENT, SELECTOR LEVER 194	EA 1
N	B-4	6	PAOZZ	1005-00-992-6657	8448627	19204	SCREW, BUTT CAP	EA 1
N	B-4	7	PAOFF	1005-00-489-0369	8448650	19204	STOCK, GUN, SHOULDER PLSTC, 10.175 LOA, 1.586 OA W, 5.05 OA H 194	EA 1
N	B-4	8	PAFZZ	5305-00-463-3893	8448654	19204	SCREW, SELF-LOCKING BUTT PLATE	EA 1
N	B-4	9	PAFZZ	1005-00-403-0964	8448652	19204	SHIVEL, SLING, SMALL ARMS REAR, STL, PHOS-CTD, 1.700 LOA, 1.348 OPNG W, 0.318 OPNG H, 0.216 MTG HOLE	EA 1
	B-4	10	PAFZZ	1005-00-403-0963	8448656	19204	PLATE, BUTT, SHOULDER GUN STOCK	EA 1
	B-4	11	PAFZZ	5315-00-463-3894	8448655	19204	PIN STRAIGHT, HEADLESS	EA 1
N	B-4	12	PAFZZ	5340-00-463-3892	8448653	19204	HINGE, ACCESS DOOR BUTT PLATE	EA 1
N	B-4	13	PAFZZ	1005-00-403-0962	8448658	19204	DOOR ASSEMBLY, STOWAGE 194	EA 1
N	B-4	14	XA		8448651	19204	BUTTSTOCK 194	EA 1
	B-4	15	PAOZZ	5360-00-992-6655	8448586	19204	SPRING, DETENT, TAKEDOWN PIN	EA 2
N	B-4	16	PAFZZ	1005-00-992-6654	8448585	19204	DETENT, TAKEDOWN PIN	EA 2
N	B-4	17	PAOZZ	1005-00-992-6653	8448584	19204	PIN, TAKEDOWN	EA 1
N	B-4	18	PAOZZ	1005-00-937-3078	8448615	19204	BUFFER ASSEMBLY LOWER RECEIVER 194	EA 1
N	B-4	19	PAOZZ	5360-00-992-6665	8448629	19204	SPRING, ACTION	EA 1
N	B-4	20	PAFZZ	1005-00-992-7297	8448581	19204	EXTENSION, LOWER RECEIVER 194	EA 1
N	B-4	21	PAFZZ	1005-00-992-6651	8448582	19204	RETAINER BUFFER	EA 1
N	B-4	22	PAFZZ	5360-00-992-6652	8448583	19204	SPRING, BUFFER RETAINER 194	EA 1
N	B-4	23	PAFZZ	1005-00-992-7309	8448609	19204	PIN, HAMMER AND TRIGGER	EA 2
N	B-4	24	PAFZ	1005-00-017-9551	8448612	19204	HAMMER, FIRING, SMALL ARMS STL PHOS-CTD 1.925 O/AL, 0.68 O/A W, RIFLE, 5, 56 MM	EA 1
N	B-4	25	PAFZZ	5360-00-992-6648	8448611	19204	SPRING, HAMMER 194	EA 1
N	B-4	26	PAFZZ	1005-00-992-6650	8448599	19204	PIN, AUTOMATIC SEAR	EA 1
N	B-4	27	PAFZZ	1005-00-992-6649	8448595	19204	SEAR, AUTOMATIC	EA 1
N	B-4	28	PAFZZ	1005-00-992-6666	8448630	19204	LEVER, SELECTOR	EA 1
N	B-4	29	PAFZZ	1005-00-999-0406	8448635	19204	DISCONNECTOR	EA 1
N	B-4	30	PAFZ	1005-00-992-7307	8448592	19204	TRIGGER, STL, PHOS-CTD, 1.99 O/A LG, 1.61 W, 0.16 DIA PIV OT HOLE	EA 1
	B-4	31	PAFZZ	5360-00-992-7308	8448593	19204	SPRING, TRIGGER	EA 1
	B-4	32	PAFZZ	5360-00-992-7311	8448594	19204	SPRING, DISCONNECTOR	EA 1
N	B-4	33	PAFZZ	5315-00-812-3312	MS16562-119	96906	PIN, SPRING TUBULAR, SLOTTED, S, PHOS-CTD, 3/32 NOM DIA, 1/2 LG 194	EA 1
N	B-4	34	PAFZZ	1005-00-017-9548	8448628	19204	CATCH, BOLT 194	EA 1
N	B-4	35	PAFZZ	1005-00-056-2247	8448634	19204	PLUNGER, BOLT CATCH	EA 1
N	B-4	36	PAFZZ	5360-00-056-2246	8448633	19204	SPRING, BOLT CATCH 194	EA 1
N	B-4	37	PAFZZ	1005-00-056-2201	8448638	19204	CATCH, MAGAZINE	EA 1
N	B-4	38	PAFZZ	1005-00-992-7302	8448636	19204	BUTTON, MAGAZINE CATCH	EA 1
N	B-4	39	PAFZZ	5360-00-992-7301	8448637	19204	SPRING, MAGAZINE CATCH	EA 1
N	B-4	40	PAFZZ	5315-00-058-6081	MS16562-129	96906	PIN, SPRING TUBULAR, SLOTTED, S, PHOS-CTD, 1/8 NOM DIA, 5/8 LG 194	HD 1

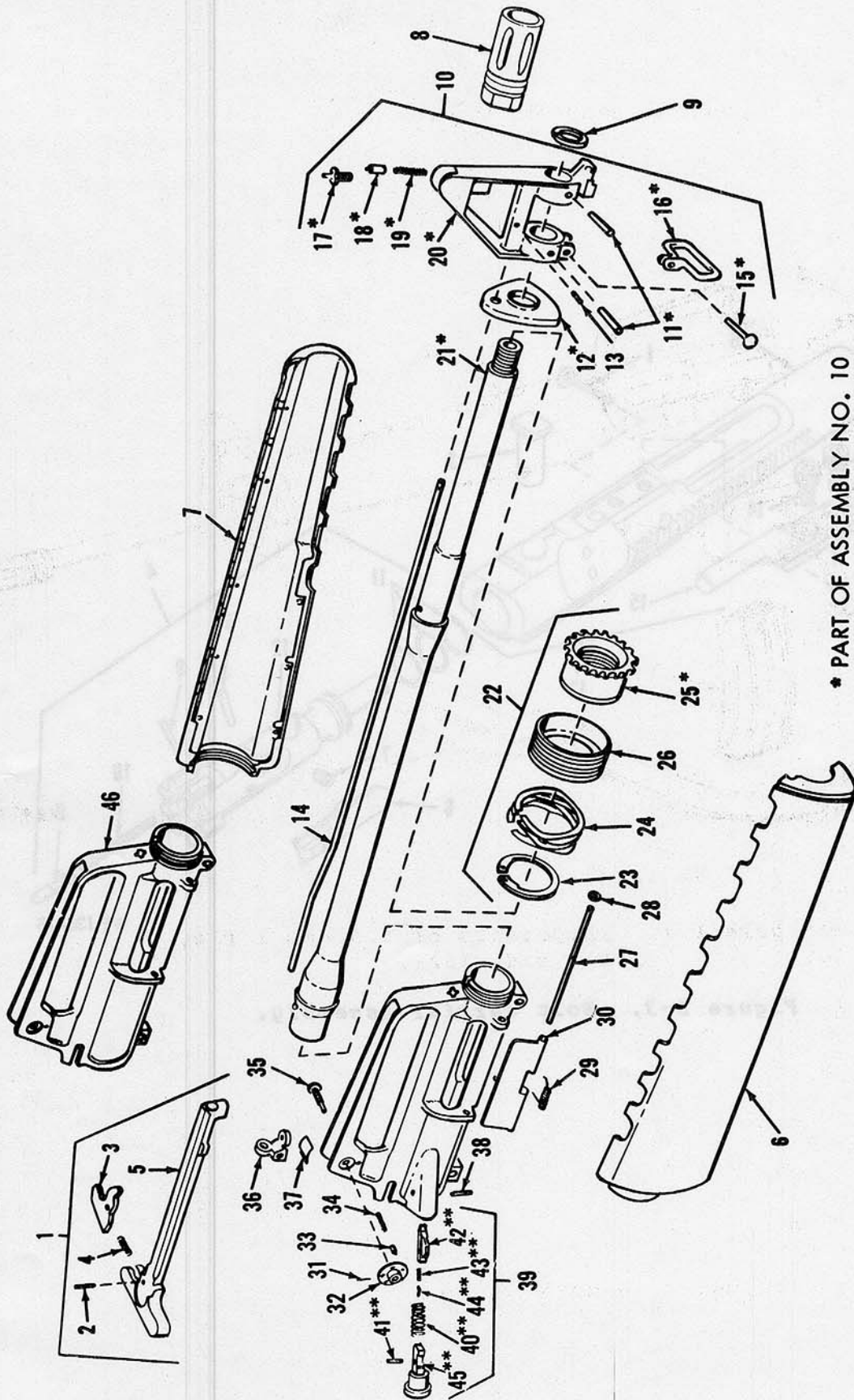
(1) ILLUSTRATION		(2)		(3)	(4)	(5)	(6) DESCRIPTION	(7)	(8)
(a) FIG NO.	(b) ITEM NC	SMR CODE	FEDERAL STOCK NUMBER	PART NUMBER	FSCM		USABLE ON CODE	U/M	QTY INC IN UNIT
N B-4	41	PAFZZ	1005-00-992-7299	8448587	19204	GUARD, TRIGGER AL-ALY, ANDZ, BLK, 2.090 LOA.	194	EA	1
N B-4	42	PAOZZ	1005-00-017-9537	8448621	19204	PIN, PIVOT LOWER RECEIVER		EA	1
N B-4	43	XA		8448608	19204	RECEIVER, LOWER		EA	1
GROUP: 04 LOWER LIGHT LEVEL SIGHT KIT 1									
N B-5	1	PAFZZ	1005-00-071-8015	8448688	19204	SIGHT, REAR		EA	1
N B-5	2	PAFZZ	1005-00-145-6378	8448691	19204	POST ASSEMBLY, FRONT	194	AY	1
GROUP: 05 LOWER LIGHT LEVEL SIGHT KIT 2									
N B-6	1	PAFZZ	1005-00-148-9114	12002964	19204	SIGHT KIT, LOW LIGHT LEVEL C/O SIGHT, REAR AND POST ASSY	194	EA	1
N B-6	2	PAFZZ	1005-00-234-1568	12002965	19204	POST ASSEMBLY, FRONT	194	EA	1
N		PAFZZ	1005-00-071-8030	5911140	19204	SIGHT KIT, LOW LIGHT LEVEL		EA	1

Figure 2-1. Components of 5.56-mm Rifle
M16 and M16A1



AR 910006

Figure B-1. Components of 5.56-mm rifle, M16 and M16A1.



* PART OF ASSEMBLY NO. 10
 ** PART OF ASSEMBLY NO. 39

AR 910007

Figure B-2. Upper receiver and barrel assembly.

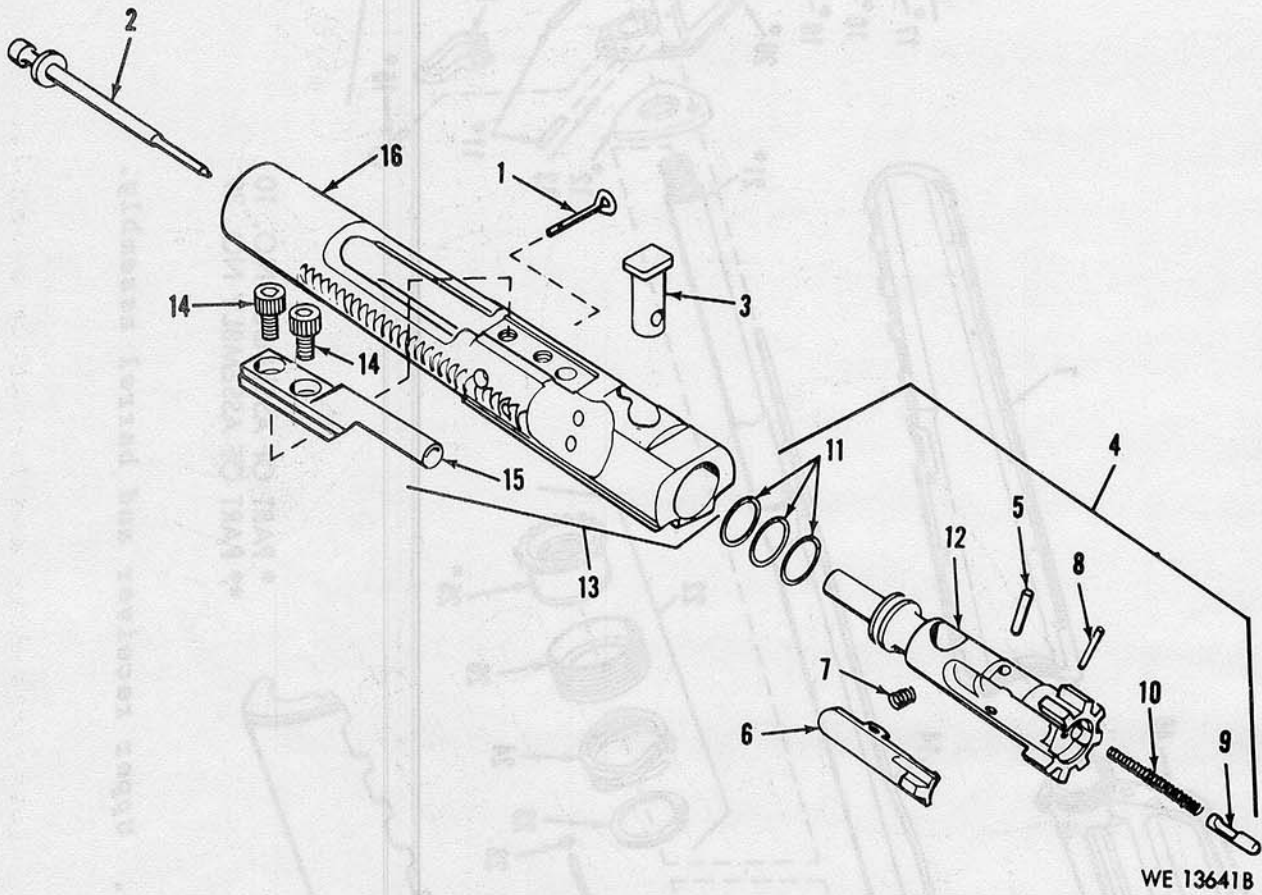
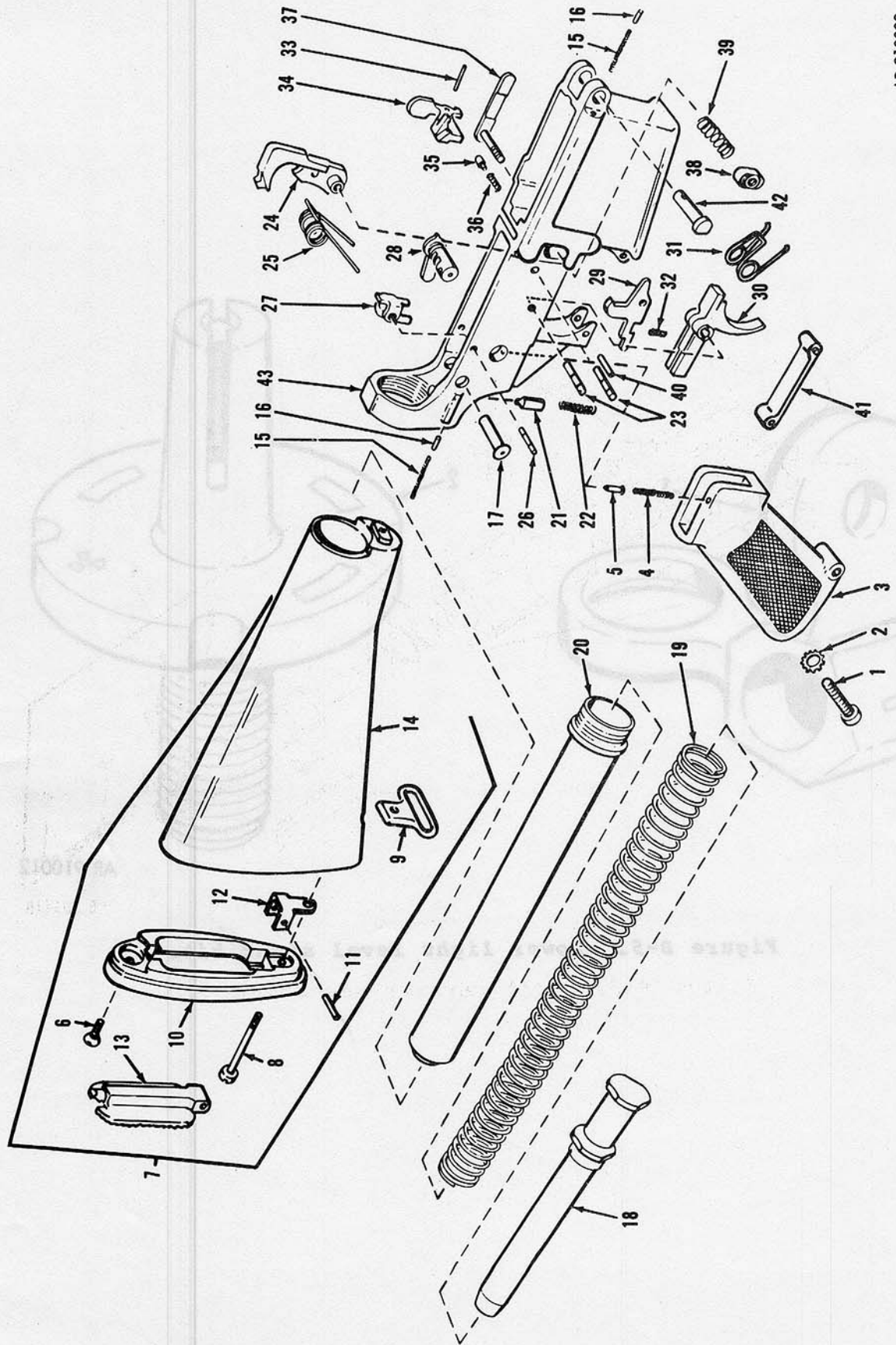
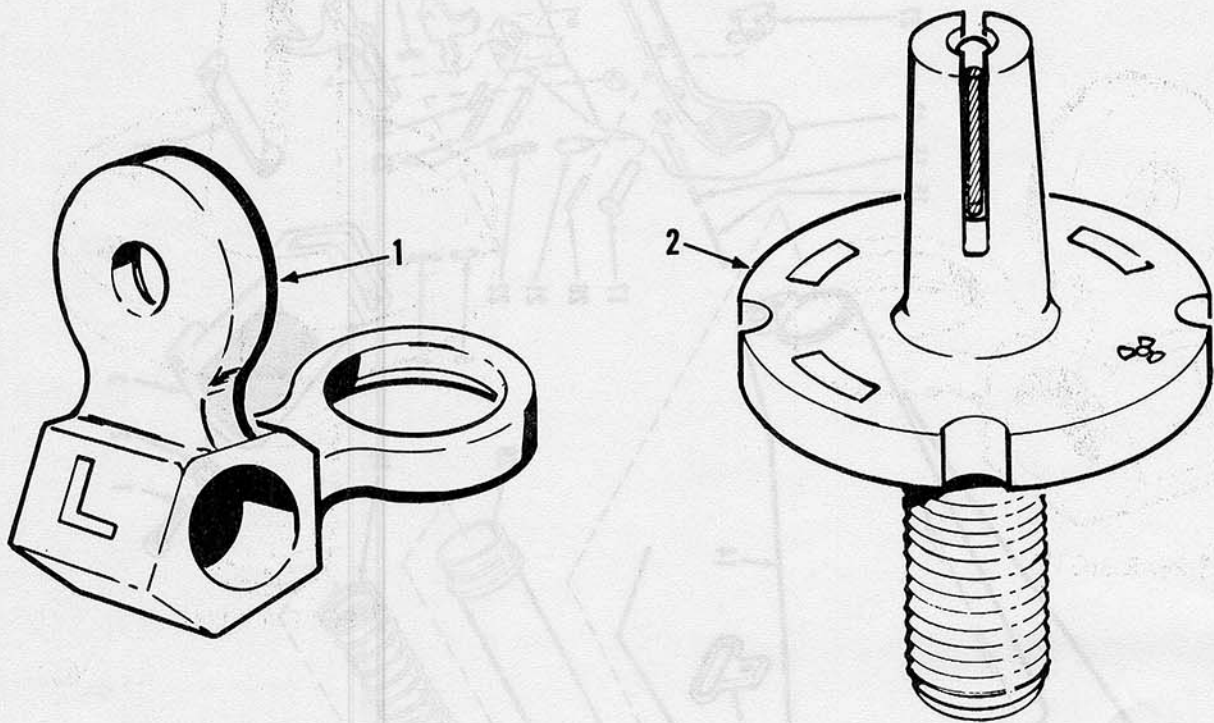


Figure B-3. Bolt carrier assembly.



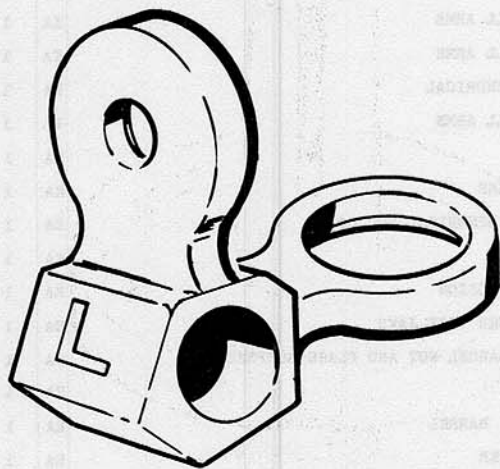
AR 910008

Figure B-4. Lower receiver and buttstock assembly.

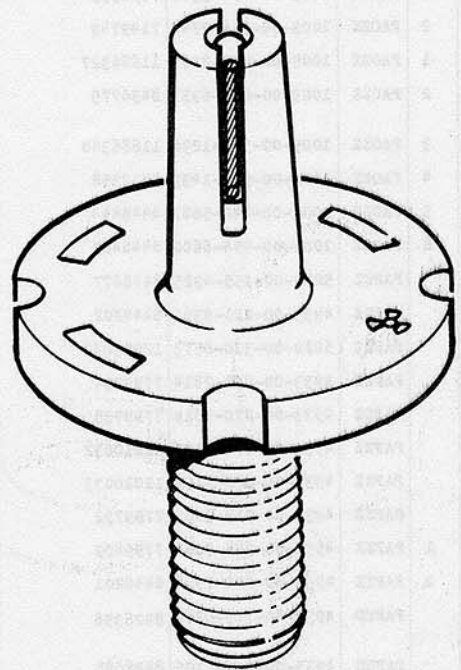


AR 910012

Figure B-5. Lower light level sight kit.



1 REAR SIGHT



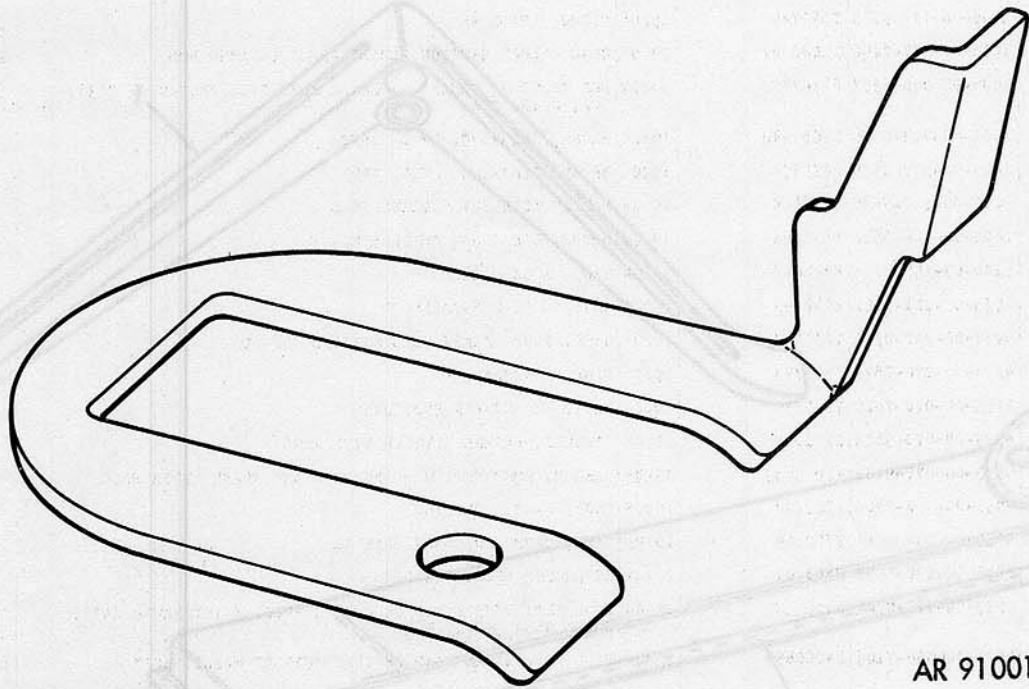
2 POST ASSEMBLY

AR 900001

Figure B-6. Rear sight and post assembly.

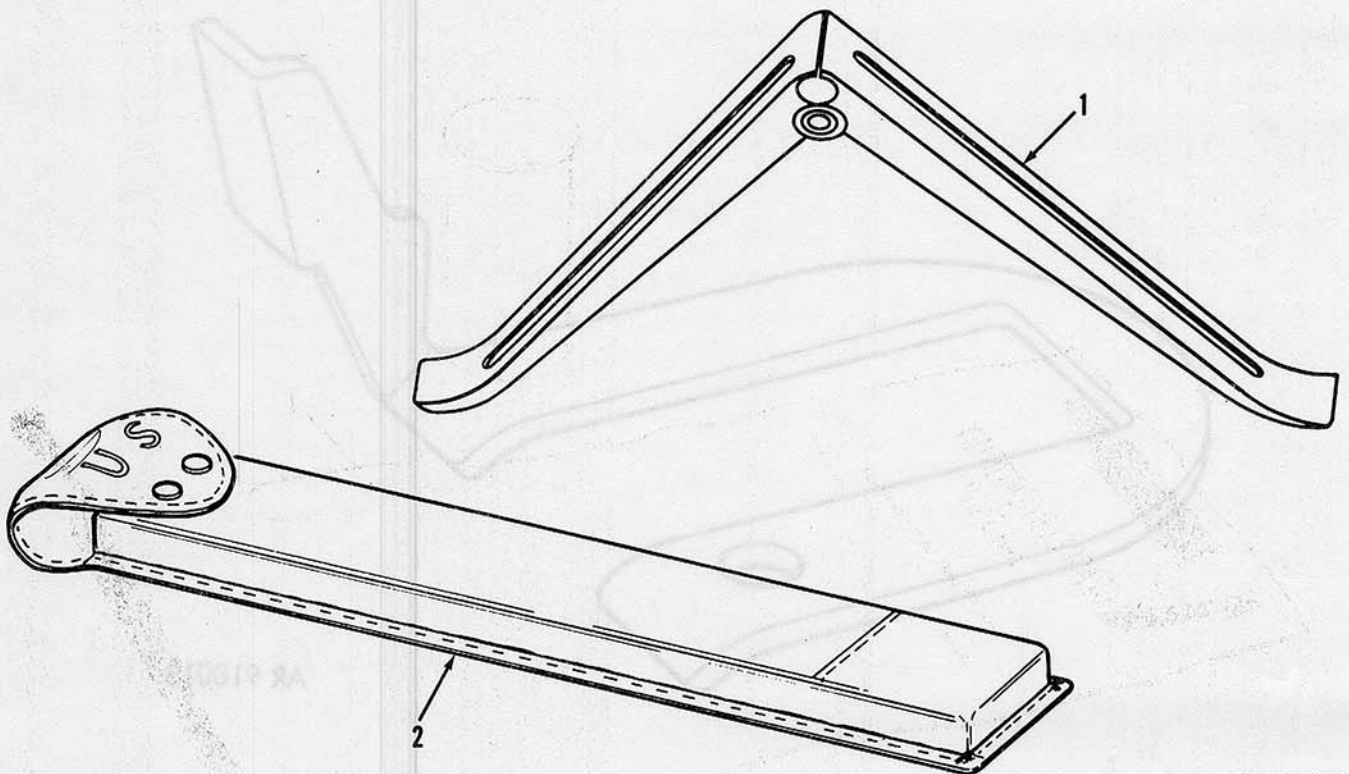
Section III. SPECIAL TOOLS LIST

(1) ILLUSTRATION		(2)	(3)	(4)	(5)	(6)	(7)	(8)
(a) FIG NO.	(b) ITEM NO.	SMR CODE	FEDERAL STOCK NUMBER	PART NUMBER	FSCM	DESCRIPTION	USABLE ON CODE	QTY INC IN UNIT
GROUP: 06 TOOLS AND EQUIPMENT								
N	B-7	PBOZZ	1005-00-233-9031	8448676	19204	PLATE, LOCKING	194	EA 1
N	B-8	1 PAOZZ	1005-00-992-6676	8448457	19204	BIPOD, RIFLE M3	755	EA 1
N	B-8	2 PAOZZ	1005-00-283-9439	12002974	19204	CASE, BIPOD		EA 1
N	B-9	1 PAOZZ	5340-00-880-7666	8445067	19204	CAP, PROTECTIVE, DUST AND MOISTURE SEAL MUZZLE	194	EA 1
N	B-9	2 PAOZZ	1005-00-193-8306	8448464	19204	BAG, PROTECTIVE, CARTRIDGE MAGAZINE (500 PER BX; FOR 30 ROUND MAGAZINE)	194	EA 1
N	B-10	1 PAOZZ	1005-00-791-3377	7790995	19205	CASE, LUBRICANT ARCIC USE ONLY	755	EA 1
N	B-10	2 PAOZZ	1005-00-714-9749	7149749	19204	SLING, SMALL ARM	194	EA 1
N	B-11	1 PAOZZ	1005-00-937-2250	11686327	19205	SWAB HOLDER SECTION, SMALL ARMS CLEANING ROD	194	EA 1
N	B-11	2 PAOZZ	1005-00-050-6357	8436775	19204	ROD SECTION, CLEANING, SMALL ARMS STL, PHOS-CTD, 7.380 LOA, 0.168 DIA	194	EA 1
	B-11	3 PAOZZ	1005-00-903-1296	11686340	19204	BRUSH, CLEANING, SMALL ARMS		EA 1
	B-11	4 PAOZZ	1005-00-999-1435	8432358	19204	BRUSH, CLEANING, SMALL ARMS		EA 1
	B-11	5 PAOZZ	1005-00-242-5687	8448444	19204	BOTTLE ASSEMBLY, CYLINDRICAL		EA 1
	B-11	6 PAOZZ	1005-00-494-6602	8448462	19204	BRUSH, CLEANING, SMALL ARMS		EA 1
N	B-12	PAFZZ	5220-00-155-4925	8448677	19204	GAGE, MUZZLE EROSION		EA 1
N	B-13	PAFZZ	4933-00-221-9391	8448202	19205	GAGE, BORE STRAIGHTNESS		EA 1
N	B-14	PAFZZ	5220-00-310-0573	12003832	19204	GAGE, PLUG, PLAIN CLYINDRICAL NOT GO		EA 1
N	B-15	PAFZZ	4933-00-070-7814	7799734	19205	GAGE, HEADSPACE		EA 1
N	B-16	PAFZZ	4933-00-070-7815	7799735	19205	GAGE, FIRING PIN PROTRUSION		EA 1
N	B-17	PAFZZ	4933-00-070-9151	11010032	19205	FIXTURE, BARREL REVISER VISE JAWS		EA 1
N	B-18	PAFZZ	4933-00-070-9152	11010033	19205	WRENCH, COMBINATION BARREL NUT AND FLASH SUPPRESSOR		EA 1
N	B-19	PAFZZ	4933-00-912-3409	7799792	19205	GAGE, BARREL EROSION		EA 1
N	B-20	1 PAFZZ	4933-00-944-7084	7799809	19205	CASE, CARRYING, GAGE, BARREL		EA 1
N	B-20	2 PAFZZ	4933-00-800-7508	8448201	19204	REFLECTOR TOOL, CHAMBER		EA 1
N		PAFHD	4933-00-775-0366	8426358	19204	TOOL SET, DIRECT AND GENERAL SUPPORT MAINTENANCE BASIC SMALL ARMS	194	EA 1
N		PAFHD	4933-00-056-7106	8426685	19204	TOOL SET, DIRECT AND GENERAL SUPPORT MAINTENANCE	194	EA 1



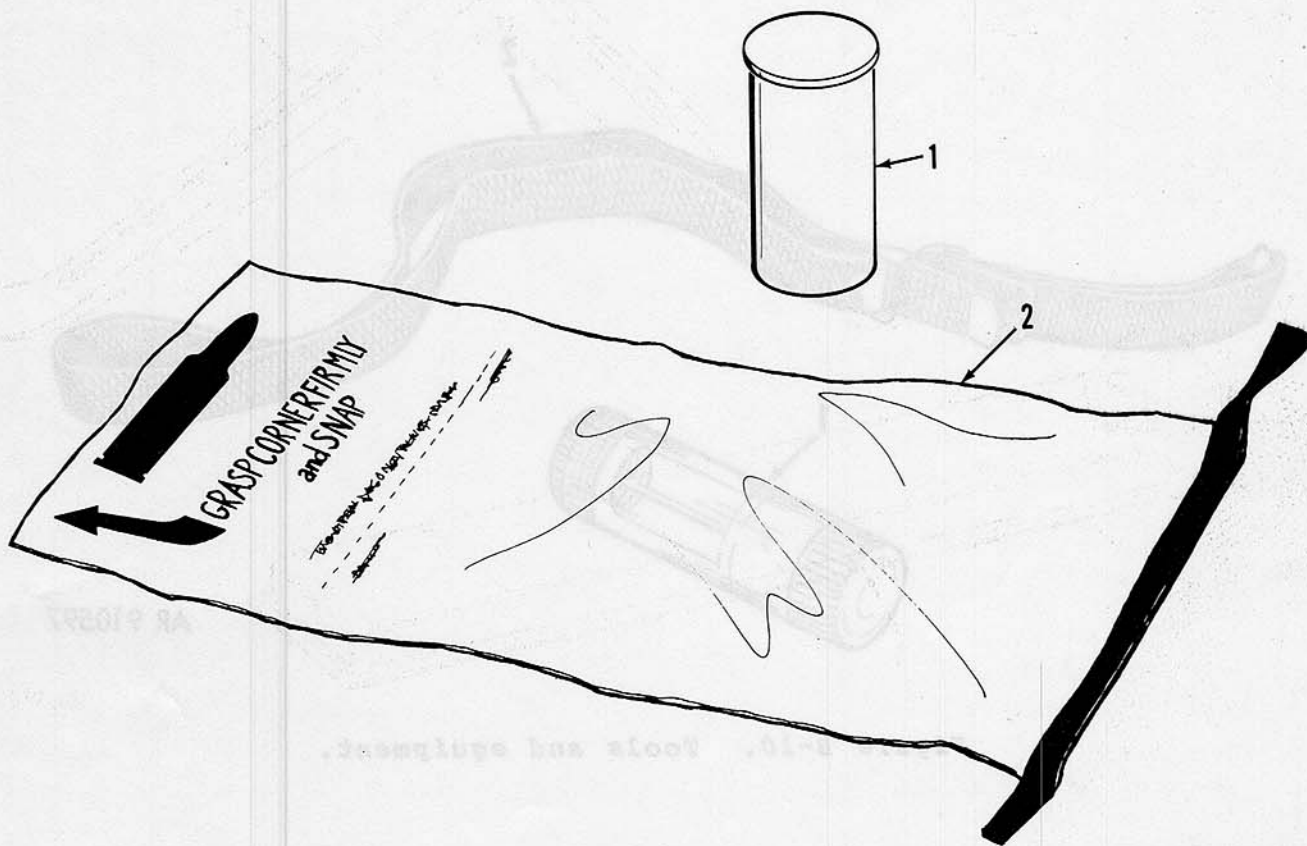
AR 910013

Figure B-7. Tools and equipment.



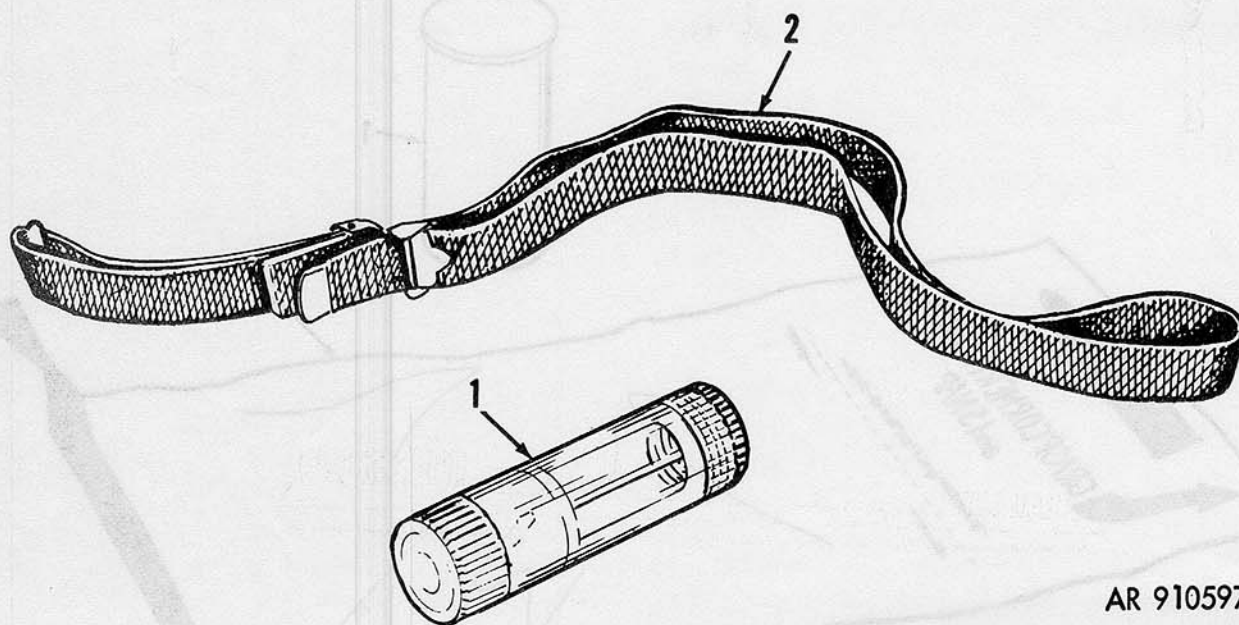
ÁR 910014

Figure B-8. Tools and equipment.



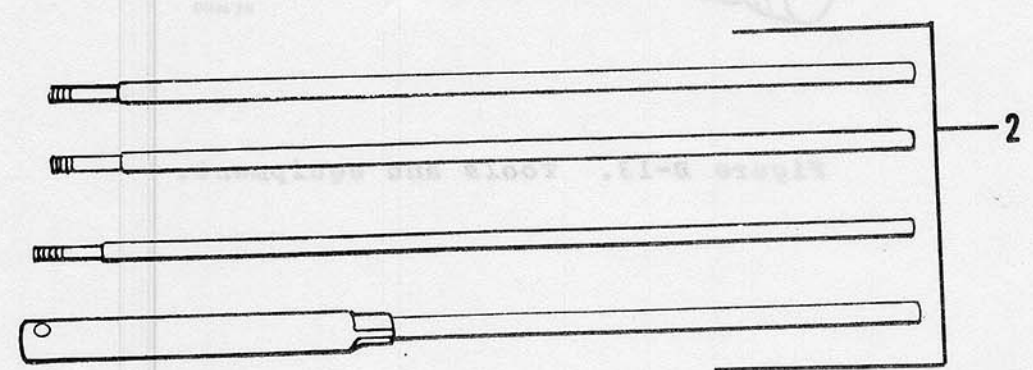
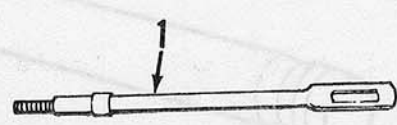
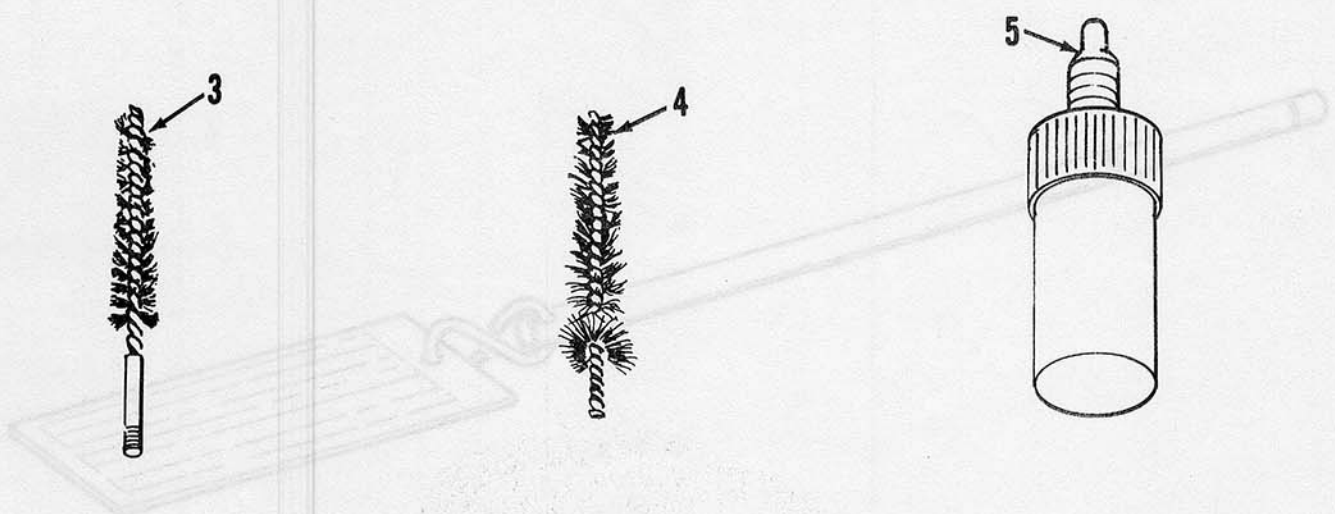
AR 910580

Figure B-9. Tools and equipment.



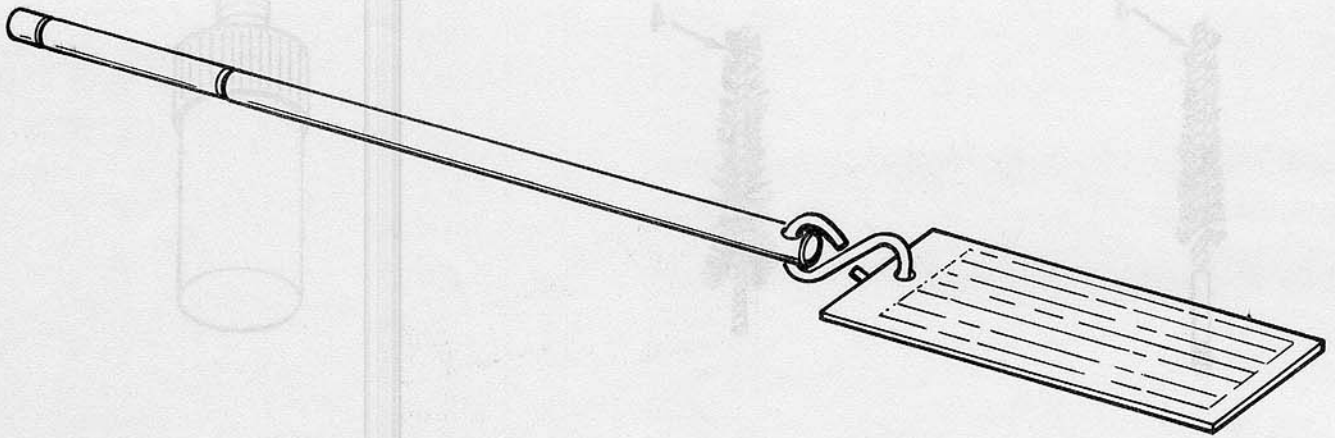
AR 910597

Figure B-10. Tools and equipment.



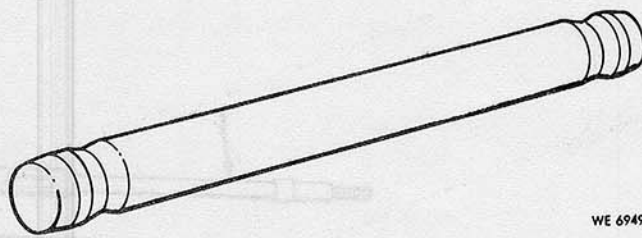
AR 910598

Figure B-11. Tools and equipment.



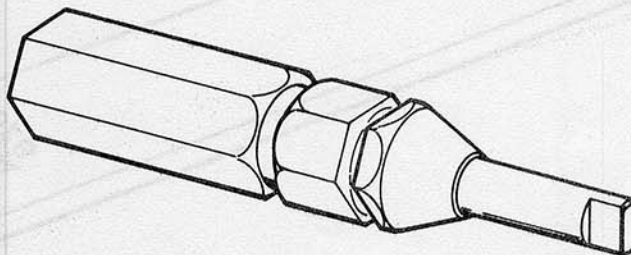
AR 910015

Figure B-12. Tools and equipment.



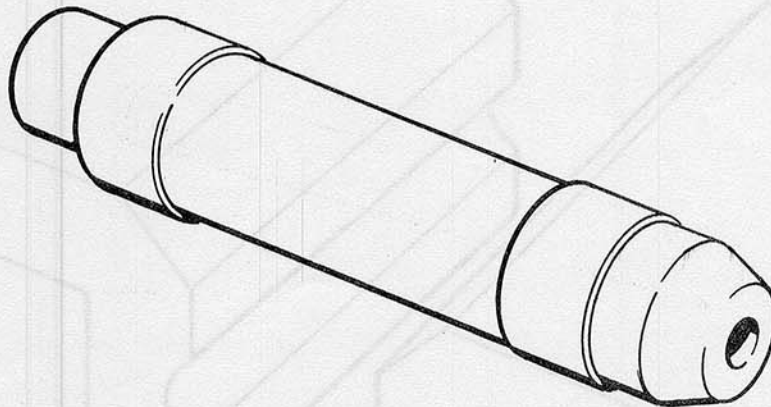
WE 69493

Figure B-13. Tools and equipment.



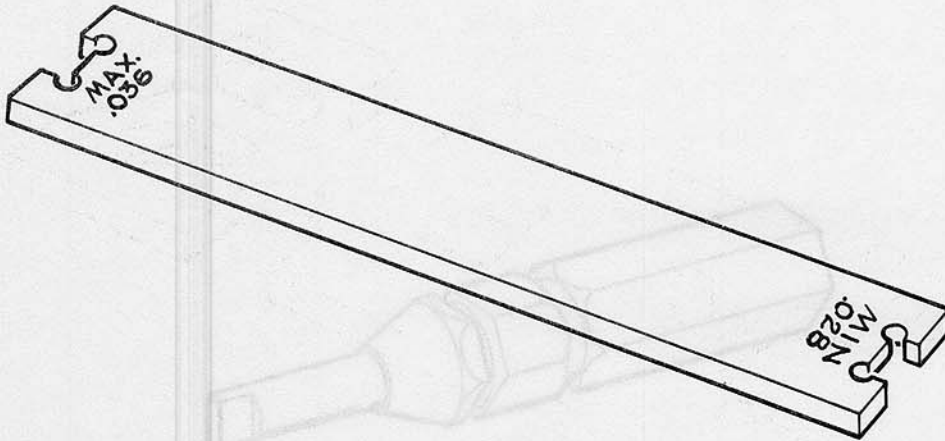
AR 910016

Figure B-14. Tools and equipment.



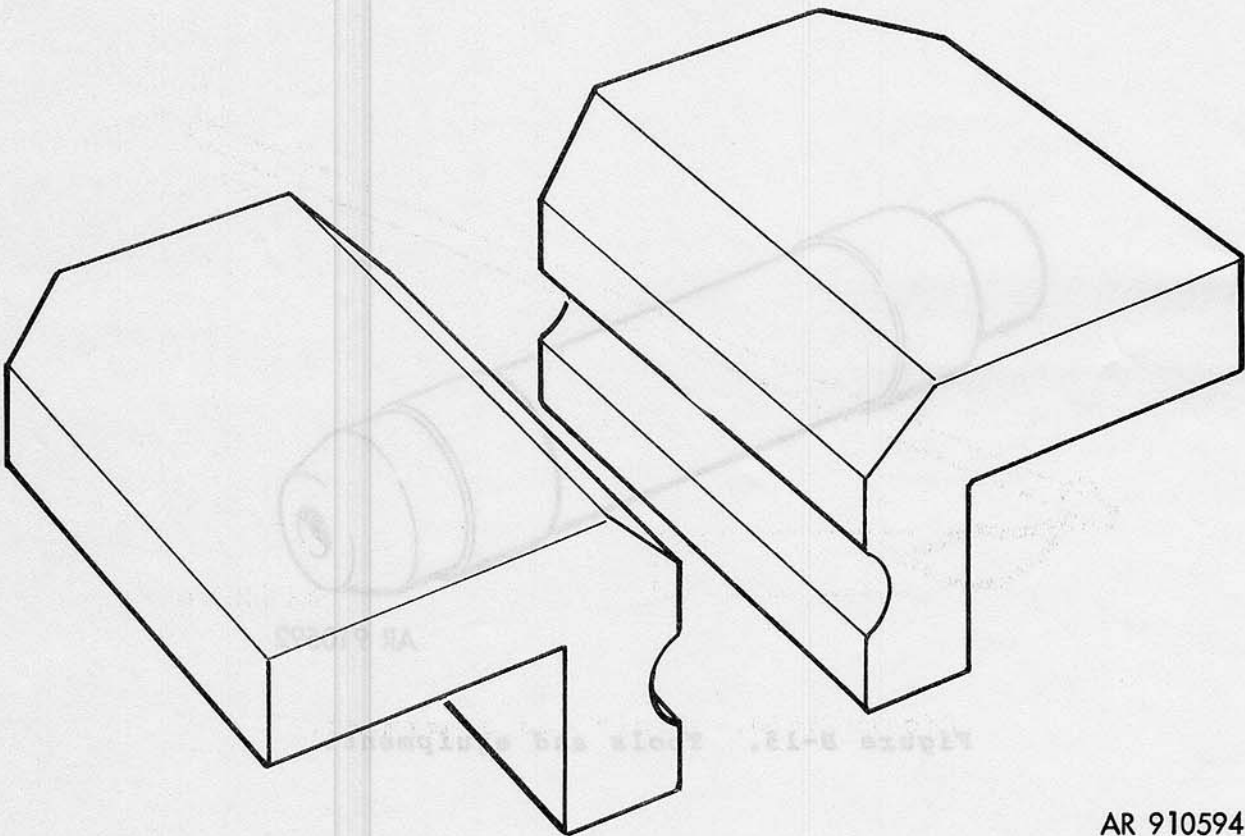
AR 910592

Figure B-15. Tools and equipment.



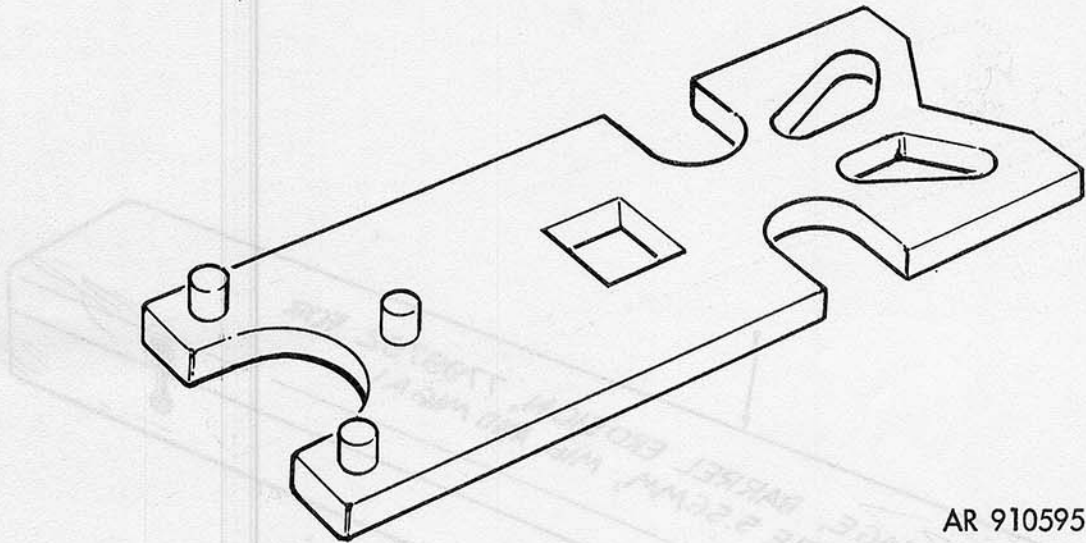
AR 910593

Figure B-16. Tools and equipment.



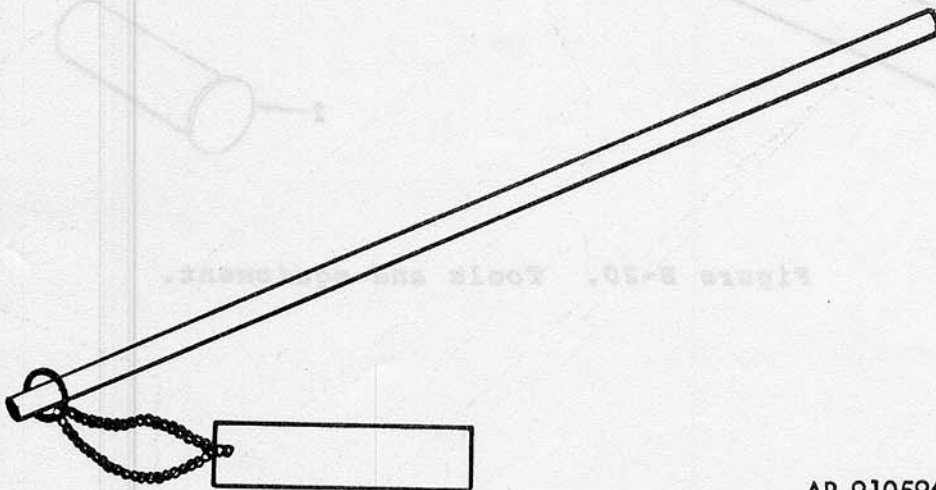
AR 910594

Figure B-17. Tools and equipment.



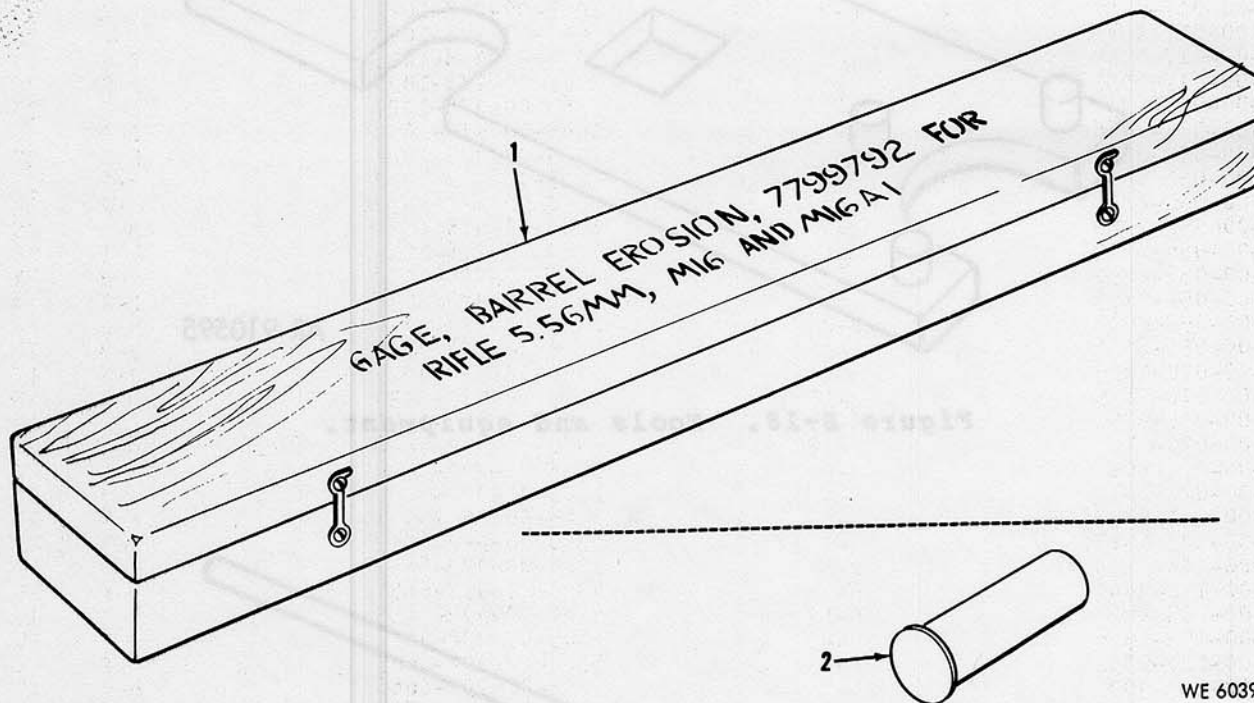
AR 910595

Figure B-18. Tools and equipment.



AR 910596

Figure B-19. Tools and equipment.



WE 60399

Figure B-20. Tools and equipment.

SECTION IV. NATIONAL STOCK NUMBER AND PART NUMBER INDEX

National stock no.	Fig no.	Item no.	National stock no.	Fig no.	Item no.
1005-00-017-9537	B-4	42	4933-00-912-3409	B-19	
1005-00-017-9538	B-2	45	5305-00-912-7296	B-4	1
1005-00-017-9539	B-2	42	1005-00-921-5004	B-1	1
1005-00-017-9540	B-2	43	1005-00-933-8089	B-2	8
5360-00-017-9541	B-2	40	1005-00-937-2250	B-11	1
1005-00-017-9543	B-2	16	1005-00-937-3078	B-4	18
1005-00-017-9546	B-2	1	4933-00-944-7084	B-20	1
1005-00-017-9547	B-3	2	1005-00-978-1022	B-2	30
1005-00-017-9548	B-4	34	1005-00-978-1023	B-2	27
1005-00-017-9550	B-2	46	5360-00-978-1025	B-2	29
1005-00-017-9551	B-4	24	1005-00-978-1026	B-2	36
1005-00-050-6357	B-11	2	5360-00-978-1027	B-2	37
5320-00-055-3066	B-2	15	1005-00-978-1028	B-2	35
1005-00-056-2201	B-4	37	1005-00-978-1029	B-2	32
5360-00-056-2246	B-4	36	1005-00-978-1030	B-2	33
1005-00-056-2247	B-4	35	5360-00-978-1032	B-2	34
1005-00-056-2250	B-4	3	1005-00-978-1034	B-2	25
1005-00-056-2251	B-2	7	1005-00-978-1035	B-2	26
1005-00-056-2252	B-2	6	1005-00-978-1036	B-2	24
4933-00-056-7106			1005-00-978-1038	B-2	14
5315-00-058-6044	B-2	13	1005-00-979-3924	B-2	12
5315-00-058-6081	B-4	40	1005-00-979-3926	B-2	11
4933-00-070-7814	B-15		1005-00-979-3929	B-2	17
4933-00-070-7815	B-16		1005-00-979-3930	B-2	18
4933-00-070-9151	B-17		5360-00-979-3931	B-2	19
4933-00-070-9152	B-18		5360-00-992-6648	B-4	25
1005-00-071-8015	B-5	1	1005-00-992-6649	B-4	27
1005-00-071-8015	B-6	2	1005-00-992-6650	B-4	26
1005-00-071-8030	B-6	4	1005-00-992-6651	B-4	21
1005-00-145-6378	B-5	2	5360-00-992-6652	B-4	22
1005-00-148-9114	B-6	1	1005-00-992-6653	B-4	17
1005-00-152-3441	B-2	10	1005-00-992-6654	B-4	16
5220-00-155-4925	B-12		5360-00-992-6655	B-4	15
1005-00-193-8306	B-9	2	1005-00-992-6657	B-4	6
4933-00-221-9391	B-13		5360-00-992-6665	B-4	19
1005-00-233-9031	B-7		1005-00-992-6666	B-4	28
1005-00-234-1568	B-6	3	1005-00-992-6667	B-4	5
1005-00-242-5687	B-11	5	1005-00-992-6676	B-4	1
5315-00-282-3642	B-2	2	1005-00-992-7280	B-2	9
5315-00-282-3642	B-2	31	1005-00-992-7283	B-3	15
5315-00-282-3642	B-2	41	1005-00-992-7284	B-3	14
1005-00-283-9439	B-8	2	1005-00-992-7285	B-3	4
5220-00-310-0573	B-14		1005-00-992-7287	B-3	11
1005-00-403-0962	B-4	13	1005-00-992-7288	B-3	6
1005-00-403-0963	B-4	10	1005-00-992-7290	B-3	5
1005-00-403-0964	B-4	9	1005-00-992-7291	B-3	9
5340-00-463-3892	B-4	12	5360-00-992-7292	B-3	10
5305-00-463-3893	B-4	8	5360-00-992-7292	B-4	4
5315-00-463-3894	B-4	11	1005-00-992-7294	B-3	3
1005-00-489-0369	B-4	7	1005-00-992-7297	B-4	20
1005-00-494-6602	B-11	6	1005-00-992-7299	B-4	41
5315-00-514-2358	B-3	8	5360-00-992-7301	B-4	39
5360-00-523-8084	B-2	44	1005-00-992-7302	B-4	38
5310-00-527-3634	B-4	2	1005-00-992-7307	B-4	30
1005-00-714-9749	B-1	5	5360-00-992-7308	B-4	31
1005-00-714-9749	B-10	2	1005-00-992-7309	B-4	23
1005-00-738-6213	B-3	16	5360-00-992-1296	B-11	3
1005-00-760-3768	B-3	7	5360-00-999-0404	B-2	4
4933-00-775-0366			1005-00-999-0405	B-2	3
1005-00-791-3377	B-10	1	1005-00-999-0406	B-4	29
4933-00-800-7508	B-20	2	5365-00-999-0863	B-2	23
5315-00-812-3312	B-4	33	5365-00-999-0864	B-2	28
5315-00-840-3812	B-2	38	1005-00-999-1435	B-11	4
5340-00-880-7666	B-9	1	5315-00-999-1509	B-3	1
1005-00-903-1296	B-11	3			

SECTION IV. NATIONAL STOCK NUMBER AND PART NUMBER INDEX

Part no.	FSCM	Fig no.	Item no.	Part no.	FSCM	Fig no.	Item no.
MS16535-125	96906	B-2	15	8448532	19204	B-2	29
MS16562-106	96906	B-2	13	8448533	19204	B-2	27
MS16562-119	96906	B-4	33	8448534	19204	B-2	35
MS16562-121	96906	B-2	38	8448535	19204	B-2	32
MS16562-129	96906	B-4	40	8448536	19204	B-2	37
MS16562-96	96906	B-2	2	8448537	19204	B-2	33
MS16562-96	96906	B-2	31	8448538	19204	B-2	34
MS16562-96	96906	B-2	41	8448539	19204	B-2	36
MS16562-99	96906	B-3	8	8448540	19204	B-2	40
MS16632-3012	96906	B-2	28	8448541	19204	B-2	39
MS35276-284	96906	B-4	1	8448542	19204	B-2	44
MS35335-61	96906	B-4	2	8448543	19204	B-2	42
11010032	19205	B-17		8448544	19204	B-2	43
11010033	19205	B-18		8448545	19204	B-2	45
11686327	19205	B-5	6	8448548	19204	B-2	21
11686340	19204			8448552	19204	B-2	22
12002964	19204	B-5		8448553	19204	B-2	25
12002965	19204	B-6	1	8448554	19204	B-2	26
12002974	19204	B-8	2	8448555	19204	B-2	24
12003832	19204	B-14		8448557	19204	B-2	7
59111140	19204	B-6	4	8448561	19204	B-2	6
7149749	19204	B-10	2	8448564	19204	B-2	12
7448522	19204	B-1	4	8448566	19204	B-2	20
7790995	19205	B-10	1	8448567	19204	B-2	14
7799734	19205	B-15		8448571	19204	B-2	16
7799735	19205	B-16		8448572	19204	B-2	17
7799792	19205	B-19		8448573	19204	B-2	18
7799809	19205	B-20	1	8448574	19204	B-2	19
8426358	19204			8448575	19204	B-2	11
8426685	19204			8448576	19204	B-2	8
8432358	19204			8448577	19204	B-2	9
8436775	19204	B-11	2	8448578	19204	B-1	2
8445067	19204	B-6	1	8448581	19204	B-4	20
8448201	19204	B-20	2	8448582	19204	B-4	21
8448202	19205	B-13		8448583	19204	B-4	22
8448444	19204	B-5	3	8448584	19204	B-4	17
8448457	19204	B-12	1	8448585	19204	B-4	16
8448462	19204			8448586	19204		
8448464	19204	B-9	2	8448587	19204	B-4	41
8448501	19204	B-1	3	8448592	19204	B-4	30
8448502	19204	B-3	3	8448593	19204		
8448503	19204	B-3	2	8448594	19204		
8448504	19204	1		8448595	19204	B-4	27
8448505	19204	B-3	13	8448599	19204	B-4	26
8448506	19204	B-3	15	8448603	19204	B-2	46
8448507	19204	B-3	16	8448670	19204	B-1	2
8448508	19204	B-3	14	8448608	19204	B-4	43
8448509	19204	B-3	4	8448609	19204	B-4	23
8448510	19204	B-3	12	8448611	19204	B-4	25
8448511	19204	B-3	11	8448612	19204	B-4	24
8448512	19204	B-3	6	8448615	19204	B-4	18
8448513	19204	B-3	5	8448621	19204	B-4	42
8448515	19204	B-3	9	8448627	19204	B-4	6
8448516	19204	B-3	10	8448628	19204	B-4	34
8448516	19204	B-4	4	8448629	19204	B-4	19
8448517	19204	B-2	1	8448630	19204	B-4	28
8448518	19204	B-2	5	8448631	19204	B-4	5
8448519	19204	B-2	3	8448632	19204	B-4	3
8448520	19204	B-2	4	8448633	19204	B-4	36
8448525	19204	B-2	30	8448634	19204	B-4	35

SECTION IV. NATIONAL STOCK NUMBER AND PART NUMBER INDEX

Part no.	FSCM	Fig no.	Item no.	Part no.	FSCM	Fig no.	Item no.
8448635	19204	B-4	29	8448658	19204	B-4	13
8448636	19204	B-4	38	8448663	19204	B-2	10
8448637	19204	B-4	39	8448665	19204	B-2	23
8448638	19204	B-4	37	8448670	19204		
8448650	19204	B-4	7	8448676	19204	B-7	
8448651	19204	B-4	14	8448677	19204	B-12	
8448652	19204	B-4	9	8448688	19204	B-5	1
8448653	19204	B-4	12	8448688	19204	B-6	2
8448654	19204	B-4	8	8448691	19204	B-5	2
8448655	19204			8448755	19204		
8448656	19204						

★U.S. GOVERNMENT PRINTING OFFICE: 1976-650-496 / 71