

Manual No. CM-104

# **COLT'S COMMANDO SUBMACHINE GUN**

## **OPERATION AND MAINTENANCE MANUAL**

January 1972



**COLT INDUSTRIES OPERATING CORP  
WEAPONS DIVISION**

Digitized by:

**SMALL ARMS** | OF THE WORLD  
SMALLARMSOFTHEWORLD.COM

TABLE OF CONTENTS

<u>Section No.</u>	<u>Title</u>	<u>Page No.</u>
	CHAPTER I – INTRODUCTION	1
1.	Purpose and Scope	1
2.	Introduction	1
	CHAPTER II – OPERATING INSTRUCTIONS	3
1.	Cycles of Operation	3
2.	Controls	3
3.	Operation	4
4.	Functional Check	4
5.	Pre-issue Service	4
6.	Pre-functioning Lubrication	4
	CHAPTER III – MAINTENANCE INSTRUCTIONS	5
1.	Tools and Materials	5
2.	Maintenance Procedures	5
	CHAPTER IV – AMMUNITION	11
	CHAPTER V – REPAIR PARTS	11
	APPENDIX A – MAINTENANCE REPAIR PARTS	13
	APPENDIX B – TOOLS AND EQUIPMENT	15

## CHAPTER I – INTRODUCTION

### Section 1 - Purpose and Scope

#### 1-1. General

This manual is a supplement to Colt's M16 (AR-15) Automatic Rifle Manual No. CM-101, Operation and Maintenance Instructions, and Cm-102, Armorer/Depot Maintenance and Repair Manual, and contains additional pertinent information for the guidance of personnel responsible for the operation, maintenance, and repair of Colt's Commando Submachine Gun. Procedures relating to the Commando that are identical to those pertaining to the M16 are referenced to Manual No. CM-101 and to CM-102.

### Section 2 - Introduction

#### 1-2. Description

Colt's Commando Submachine Gun is similar to Colt's M16 Automatic Rifle as described in Manual No. CM-101, paragraph 1-3, pages 2 through 5. However, the Commando has a shorter barrel and handguard, a telescoping buttstock, and a different type noise/flash suppressor.

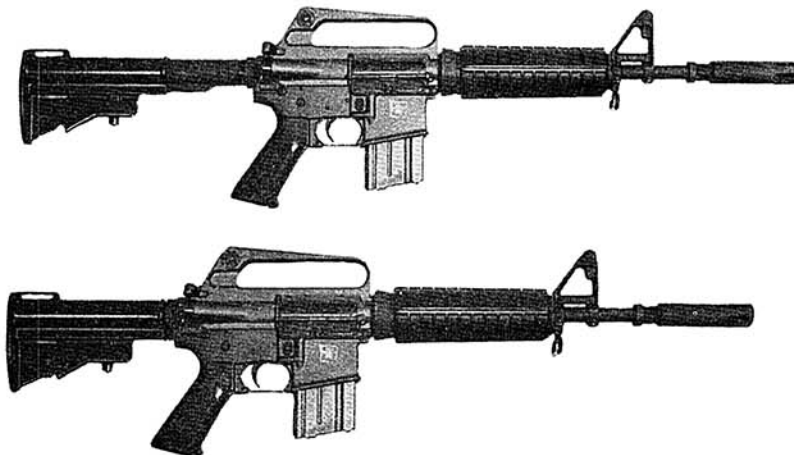


Figure 1. Colt's Commando Submachine Gun  
with Buttstock Extended and Retracted.

CHAPTER II – OPERATING INSTRUCTIONS

Section 1 - Cycles of Operation

2-1. General

Refer to Manual No. CM-101, paragraph 2-1, pages 7 through 12, for a description of the cycles of operation.

Section 2 - Controls

2-2. Controls

Refer to Manual No. CM-101, paragraph 2-2, pages 12 through 14, for a description of the controls. For controls peculiar to the Commando Submachine Gun, refer to Figure 2 of this manual.

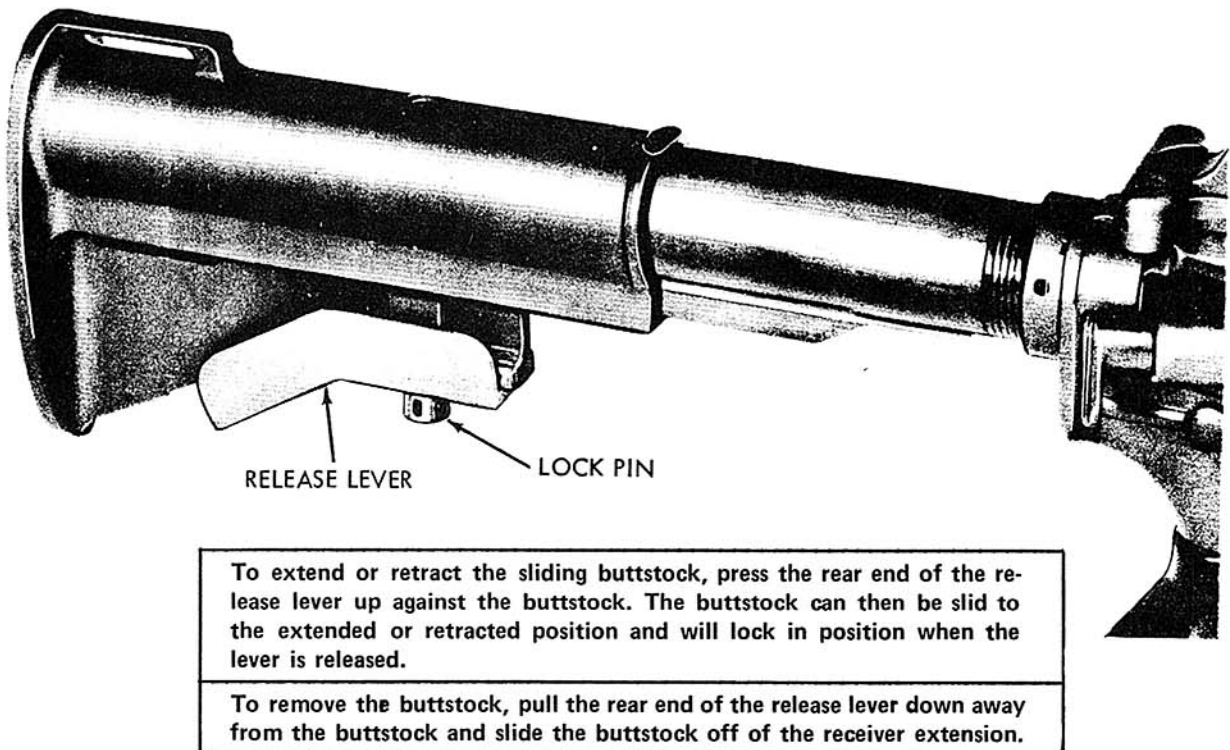


Figure 2. Controls Peculiar to the Commando Submachine Gun.

## CHAPTER III – MAINTENANCE INSTRUCTIONS

### Section 1 - Tools, Materials, and Equipment

#### 3-1. Operator Maintenance Tools, Materials, and Equipment

Refer to Manual No. CM-101, paragraph 3-1, page 27, for the list of tools, materials, and equipment required for operator maintenance of the Commando Submachine Gun.

#### 3-2. Unit Maintenance Tools, Equipment, and Parts

Refer to Manual No. CM-101, paragraph 3-2, page 28, for the list of tools, equipment, and parts required for maintenance functions performed by the unit armorer. For a list of tools and equipment peculiar to the Commando Submachine Gun, refer to Appendix B, page 15, of this manual. For the lists of parts required by the unit armorer, refer to Manual No. CM-101, Appendix B, pages 65 through 70 and to Appendix A, page 13, of this manual.

#### 3-3. Armorer/Depot Maintenance Tools, Materials, and Parts

Refer to Manual No. CM-102, Table 2-1, page 3, for a list of maintenance tools required for armorer/depot maintenance. For tools peculiar to the Commando Submachine Gun, refer to Appendix B, page 15, of this manual. For the list of consumable maintenance materials, refer to Manual No. CM-102, Table 2-2, page 5. For the lists of repair parts required for armorer/depot maintenance, refer to Manual No. CM-102, Appendix B, pages 65 through 70, and to Appendix A, page 13, of this manual.

### Section 2 - Maintenance Procedures

#### 3-4. Operator Maintenance Procedures

Refer to Manual No. CM-101, paragraphs 3-3 through 3-8, pages 29 through 42, for the operator maintenance procedures.

#### 3-5. Unit Maintenance Procedures

Refer to Manual No. CM-101, paragraphs 3-9 through 3-14, pages 43 through 49, for the procedures to be followed by the unit armorer.

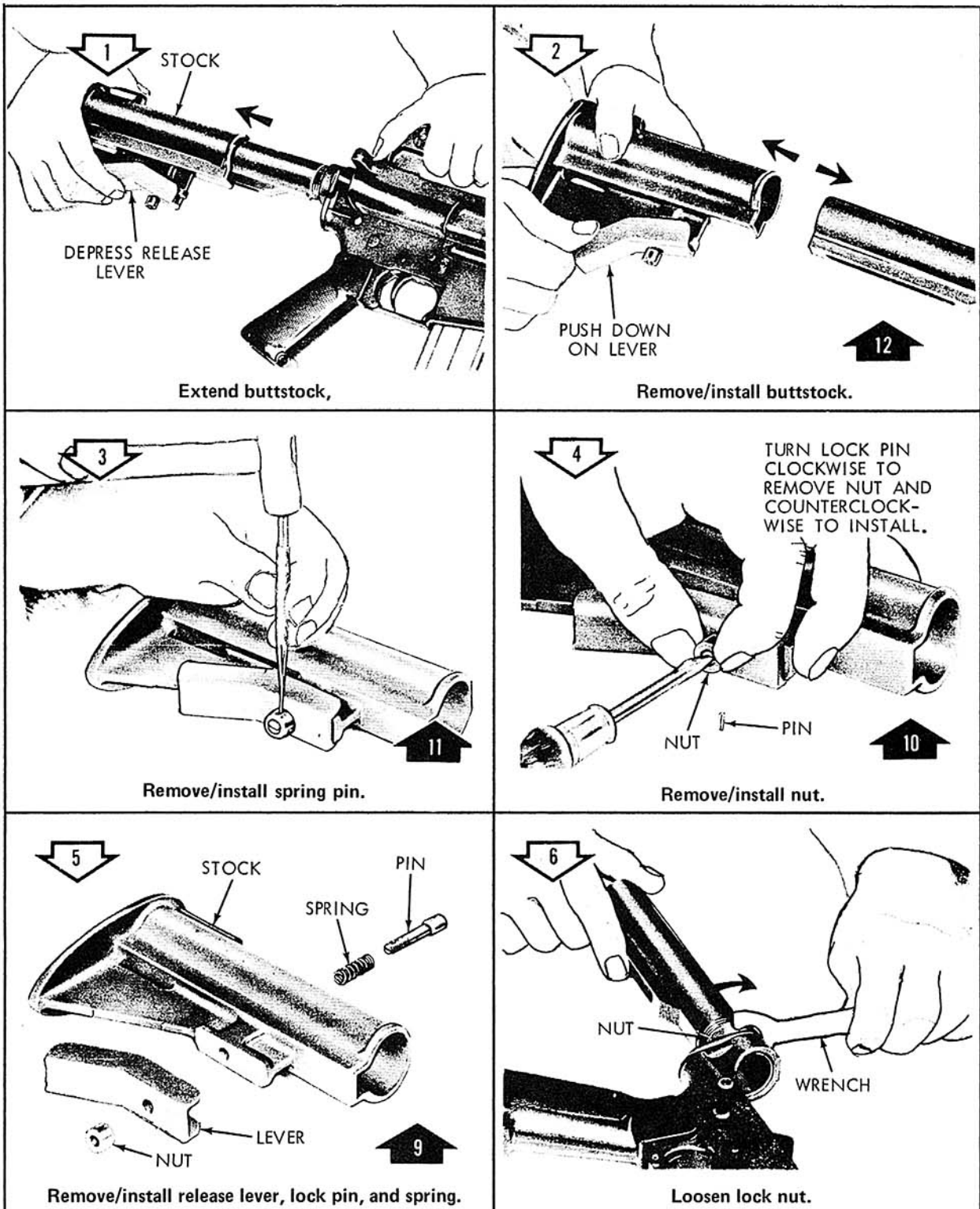




Figure 3. Disassembly/Assembly of the Commando Submachine Gun.  
(Page 1 of 3)

 Open arrows indicate disassembly sequence.  
 Solid arrows indicate assembly sequence.

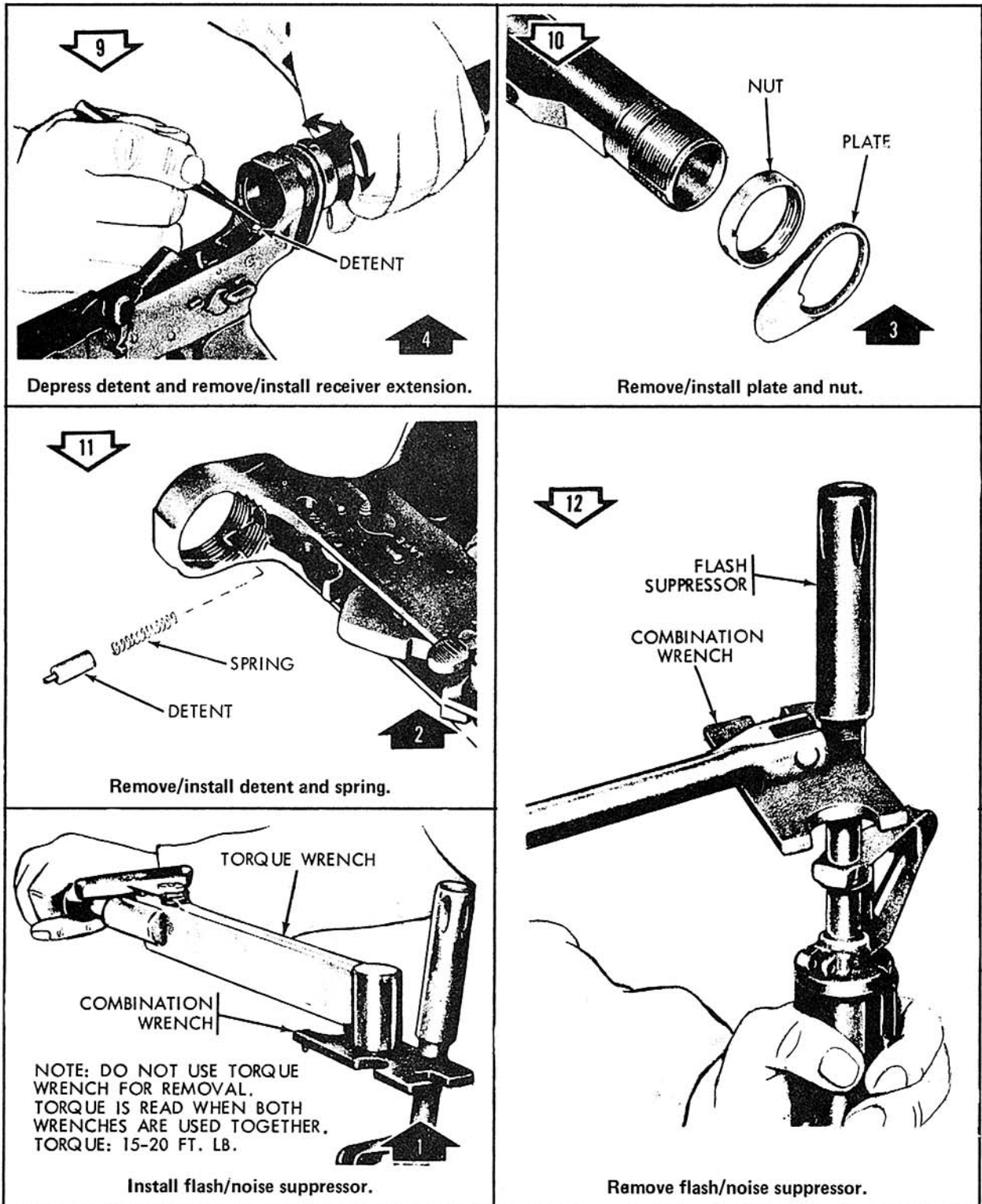


Figure 3. Disassembly/Assembly of the Commando Submachine Gun.  
 (Page 3 of 3)

## CHAPTER IV – AMMUNITION

### 4-1. Ammunition

Refer to Manual No. CM-101, Chapter V, pages 61 through 63, for information regarding ammunition.

## CHAPTER V – REPAIR PARTS

### 5-1. Operator and Unit Maintenance Repair Parts

Refer to Manual No. CM-101, Appendix A, page 64, for a list of operator and unit maintenance installed repair parts. For a list of repair parts peculiar to the Commando Submachine Gun, refer to Appendix A, page 13, of this manual.

### 5-2. Armorer/Depot Maintenance Repair Parts

For a list of armorer/depot installed repair parts, refer to Manual No. CM-102, Appendix B, page 47, For a list of repair parts peculiar to the Commando Submachine Gun, refer to Appendix A, page 13, of this manual.

APPENDIX A – MAINTENANCE REPAIR PARTS

This appendix lists those parts that are peculiar to the Commando Submachine Gun. For a list of repair parts that are common to both the M16 Automatic Rifle and the Commando, refer to Manual No. CM-101, Appendix A, page 64, and to Manual No. CM-102, Appendix B, pages 47 through 54. The parts listed below are illustrated in Figure 4, page 12, of this manual and the Figure 4 index numbers are sequenced in order of assembly.

Colt's Part No.	Description	Figure & Index Number
62488	Replacement Barrel and Front Sight Assembly	4-12 ***
62482	Barrel Nut Assembly	*
62382	Buffer Assembly	4-7
62486	Buttstock, Sliding	4-1
62346	Cap, Hand Guard	4-13
62474	Ejection Port Cover Assembly	4-20
62356	Extension, Receiver	4-9
62366	Gas Tube Assembly	4-15
62381	Hand Guard Assembly	4-22
62487	Lever, Release	4-4
61902	Nut, Barrel	4-14**
62368	Nut, Lock Pin	4-5
62357	Nut, Receiver Extension	4-10
62478	Pin, Hinge - Ejection Port Cover	4-19
62361	Pin, Lock - Release Lever	4-3
95142	Pin, Spring - Release Lever Nut	4-6
62358	Plate, Receiver End	4-11
62483	Slip Ring, Hand Guard	4-16**
90403	Snap Ring, Hand Guard	4-18**
62485	Spacer, Launcher	4-23
62373	Spring, Action	4-8
62369	Spring, Locking - Release Lever	4-2
62484	Spring Weld Assembly, Hand Guard Slip Ring	4-17**
62370	Suppressor, Noise and Flash	4-24
62473	Upper Receiver Assembly	4-21

\* The P/N 62482 Barrel Nut Assembly consists of items 4-14 and 4-16 through 4-18.

\*\* Each part so designated is a component of P/N 62482 Barrel Nut Assembly.

\*\*\* The P/N 62488 Replacement Barrel and Front Assembly is supplied with items 4-13 and 4-14 installed. However, these items may be ordered separately if desired.

APPENDIX B – TOOLS AND EQUIPMENT

This appendix lists those tools and items of equipment that are peculiar to the Commando Submachine Gun. Additional tools and items of equipment that are applicable to both the M16 Automatic Rifle and the Commando Submachine Gun are listed in Manual No. CM-101, paragraphs 3-1 and 3-2, pages 27 and 28, and in Manual No. CM-102, Appendix A, pages 41 through 48.

Colt's Part No.	Description	Figure Number
62420	WRENCH, SPANNER	5
62149	SLING, SMALL ARMS	6