



**COLT**®

MILITARY RIFLE & CARBINE CATALOG

Digitized by:

**SMALL ARMS** | OF THE WORLD  
SMALLARMSOFTHEWORLD.COM



**QUALITY MAKES IT A COLT.** Selecting the weapons that will equip a country's Armed Forces is a crucial process with strong military and political implications. Therefore, the most reliable and combat-proven weapons in the world must be chosen. As the premier small-arms industry leader, Colt Defense LLC has provided U.S., NATO and other military forces with the finest battlefield weapons ever created. Colt weapons are designed and built with an emphasis on combat effectiveness, simplicity of operation, maximum interchangeability of parts, and ease of maintenance. As a result, our weapons are extremely durable, with high performing systems and unusually low life cycle maintenance costs. All of which makes Colt weapons the ideal weapons for broad deployment among any type of military unit. Since 1846, Colt has stood shoulder to shoulder with the military and continues to evolve in order to safeguard our soldiers.

Disclaimer: Colt weapons shown in this catalog are not necessarily sold in the configuration with accessories shown. Please contact Colt Defense LLC sales for more information about available weapon configurations and accessories. Weights for all guns are without magazine.

This catalogue is provided for informational purposes only and may not be construed as a legally binding offer to sell any Colt product or service. Colt reserves the right to correct any inadvertent inaccuracies or oversights.

Purchase of Colt products and services is subject to applicable federal, state and local laws and regulations. Please consult your local, state and federal officials for regulations that apply to your intended purchase. Additional information can also be found at [www.nra.org](http://www.nra.org) and [www.nssf.org](http://www.nssf.org).

Information provided in this brochure does not include technical data that is restricted by the U.S. International Traffic in Arms Regulations.

NOTE: Technical specifications rounded to the nearest 10th.



# M4 CARBINE



The name says it all. Proven in military combat operations all over the world, the Colt M4 Carbine is in a class by itself as a first-rate combat weapon system. Designed specifically for lightweight mobility, speed of target acquisition and effective firepower capability, the battle-proven M4 Carbine delivers with the reliability, accuracy and potent performance needed to take on the most extreme situations. The M4 can be comfortably carried, yet instantly available to provide the level of firepower, dependability and accuracy of a 5.56 mm rifle. The Colt M4 is the only 5.56 mm carbine in the world that is manufactured to meet or exceed the rigorous performance specifications (MILSPEC) required for acceptance and use by the U.S. Armed Forces. Not to mention, it's the weapon of choice for U.S. Armed Forces and the weapon of the 21st century warfighter.



SPECS	R0979/R0920	R0977/R0921
<b>CALIBER</b>	5.56x45 NATO (.223 Rem.)	5.56x45 NATO (.223 Rem.)
<b>WEIGHT</b> (Without Magazine)	6.11lbs (2.771 kg)	6.11lbs (2.771 kg)
<b>OVERALL LENGTH</b>	29.8 in. (75.69 cm) Stock Retracted 33 in. (83.82 cm) Stock Extended	29.8 in. (75.69 cm) Stock Retracted 33 in. (83.82 cm) Stock Extended
<b>BARREL LENGTH</b>	14.5 in. (36.83 cm)	14.5 in. (36.83 cm)
<b>CYCLIC RATE OF FIRE</b>	700–950 rpm	700–950 rpm
<b>FIRE CONTROL</b>	Safe–Semi–Burst	Safe–Semi–Auto
<b>RIFLING</b>	1/7 RH	1/7 RH
<b>EFFECTIVE RANGE</b>	600 m	600 m
<b>OPTIONAL EQUIPMENT</b>	Heavy Barrel Available NSN 1005-01-231-0973	Heavy Barrel Available NSN 1005-01-382-0953



# ACC-M ADVANCED COLT CARBINE MONOLITHIC



Today's battlefields demand the accuracy, reliability and performance of Colt's new M4 Advanced Colt Carbine Monolithic (ACC-M). Its one-piece upper receiver provides a true free-floating barrel for increased precision. All variants of the ACC-M have ambidextrous fire controls, selector levers and magazine releases, as well as repeatable zero retention for optics and other accessories. From 3-Round Burst to Automatic modes of fire, and fixed or folding front sights, the M4 ACC-M is available in an array of configurations. These options, combined with the Colt Monolithic Rail System, provide unmatched zero retention and repeatability not found with other separate handguard rail systems.

U.S. Patent # 7,131,220 B2



## SPECS

### R0922

### R0923

CALIBER	5.56x45 NATO (.223 Rem.)	5.56x45 NATO (.223 Rem.)
WEIGHT (Without Magazine)	7 lbs (3.175 kg)	7 lbs (3.175 kg)
OVERALL LENGTH	29.8 in. (75.69 cm) Stock Retracted 33 in. (83.82 cm) Stock Extended	29.8 in. (75.69 cm) Stock Retracted 33 in. (83.82 cm) Stock Extended
BARREL LENGTH	14.5 in. (36.83 cm)	14.5 in. (36.83 cm)
CYCLIC RATE OF FIRE	700-950 rpm	700-950 rpm
FIRE CONTROL	Safe-Semi-Burst	Safe-Semi-Auto
RIFLING	1/7 RH	1/7 RH
EFFECTIVE RANGE	600 m	600 m
ADDITIONAL FEATURES	Heavy Barrel	Heavy Barrel



# M4 CQB AND COMMANDO®



Enhanced firepower, maneuverability and rapid response play a major role in joint and coalition operations in modern warfare. Colt's M4 Commando® and R0923CQB were both designed to exploit firepower capability in confined spaces where lightweight mobility, speed and violence of action rule. With its 10.3" barrel, the M4 Commando can be comfortably carried, yet instantly deliver the type of firepower required to outmatch combatants in a wide range of warfare missions.



## SPECS

### R0923CQB

### R0933

### R0935

#### CALIBER

5.56x45 NATO (.223 Rem.)

5.56x45 NATO (.223 Rem.)

5.56x45 NATO (.223 Rem.)

#### WEIGHT (Without Magazine)

5.72 lbs (2.6 kg)

5.38 lbs (2.44 kg)

5.38 lbs (2.44 kg)

#### OVERALL LENGTH

26.2 in. (66.5 cm) Stock Retracted

29.4 in. (74.6 cm) Stock Extended

27.1 in. (68.83 cm) Stock Retracted

30.4 in. (77.22 cm) Stock Extended

27.1 in. (68.83 cm) Stock Retracted

30.4 in. (77.22 cm) Stock Extended

#### BARREL LENGTH

10.3 in. (26.7 cm)

11.5 in. (29.21 cm)

11.5 in. (29.21 cm)

#### CYCLIC RATE OF FIRE

700–950 rpm

700–950 rpm

700–950 rpm

#### FIRE CONTROL

Safe–Semi–Auto

Safe–Semi–Auto

Safe–Semi–Burst

#### RIFLING

1/7 RH

1/7 RH

1/7 RH

#### EFFECTIVE RANGE

400 m

400 m

400 m

NSN 1005-01-581-2925

# SCW™ SUB COMPACT WEAPON



Maneuverability and performance in highly confined areas of operation are the key advantages of the Colt Sub Compact Weapon (SCW), the most compact of Colt's 5.56 mm family of weapons. The SCW features Colt's patented one-piece monolithic upper receiver and a Colt collapsible folding buttstock. Designed specifically for vehicle & aircraft crews, joint forces, special operations forces, and reconnaissance units, this ultra lightweight compact design allows for quick and easy transition from vehicles to aircraft, providing much more firepower and range than handguns.

Patent Pending || U.S. Patent # 7,131,228 B2



## SPECS

### SCW0921

<b>CALIBER</b>	5.56x45 NATO (.223 Rem.)
<b>WEIGHT</b> (Without Magazine)	6.5 lbs (2.95 kg)
<b>OVERALL LENGTH</b>	28.5 in. (72.39 cm) Stock Retracted 30.25 in. (76.84 cm) Stock Extended 23.5 in. (59.69 cm) Stock Collapsed
<b>BARREL LENGTH</b>	10.3 in. (26.26 cm)
<b>CYCLIC RATE OF FIRE</b>	700-950 rpm
<b>FIRE CONTROL</b>	Safe-Semi-Auto
<b>RIFLING</b>	1/7 RH
<b>EFFECTIVE RANGE</b>	400 m
<b>ADDITIONAL FEATURES</b>	Folding, Collapsible Buttstock
<b>OPTIONAL FEATURES</b>	Also available with Piston Operating System (SCW0921-P)



Shown with stock collapsed and folded

# APC

## ADVANCED PISTON CARBINE



Capable of firing in automatic and semi-automatic mode, the much anticipated Colt P0923 is an advanced modular 5.56 mm caliber piston-operated, lightweight, one-piece upper receiver, magazine-fed carbine. Innovatively constructed, the P0923 contains a unique articulating link piston (ALP) that reduces the stresses in the piston stroke by allowing for deflection and thermal expansion. And, you'll like that it's specifically designed to be just as easy to clean, assemble and disassemble as our gas operated system.



### SPECS

### P0923

CALIBER	5.56x45 NATO (.223 Rem.)
WEIGHT (Without Magazine)	7 lbs (3.175 kg)
OVERALL LENGTH	29.8 in. (75.69 cm) Stock Retracted 33 in. (83.82 cm) Stock Extended
BARREL LENGTH	14.5 in. (36.83 cm)
CYCLIC RATE OF FIRE	700-950 rpm
FIRE CONTROL	Safe-Semi-Auto
RIFLING	1/7 RH
EFFECTIVE RANGE	600 m

### COLT ALTERNATIVE OPERATING SYSTEM

At Colt, piston technology is nothing new for us. As a matter of fact, that's how the Colt Model 703 was born. In the late 1960s, Colt was the first company to put a piston system into an AR platform to meet a U.S. Army request. It's been more than 40 years now since we first produced this new wave of AR piston systems, and we continue to innovate today.



# IAR™ INFANTRY AUTOMATIC RIFLE

Cool under fire. Based on the battle-proven M16/M4 series of rifles, the Colt IAR features a unique heat-sink system, which significantly reduces the risk of cook-offs during extended periods of firing. It also provides extended barrel life over existing industry lightweight automatic rifle designs. Anyone accustomed to other Colt rifles and carbines will be instantly familiar with the specs and operational aspects of the IAR. Trust that the IAR6940 is ready to encounter and surpass the duties required of an automatic rifle in today's combat zones.

U.S. Patent # 7,131,228 B2



## SPECS

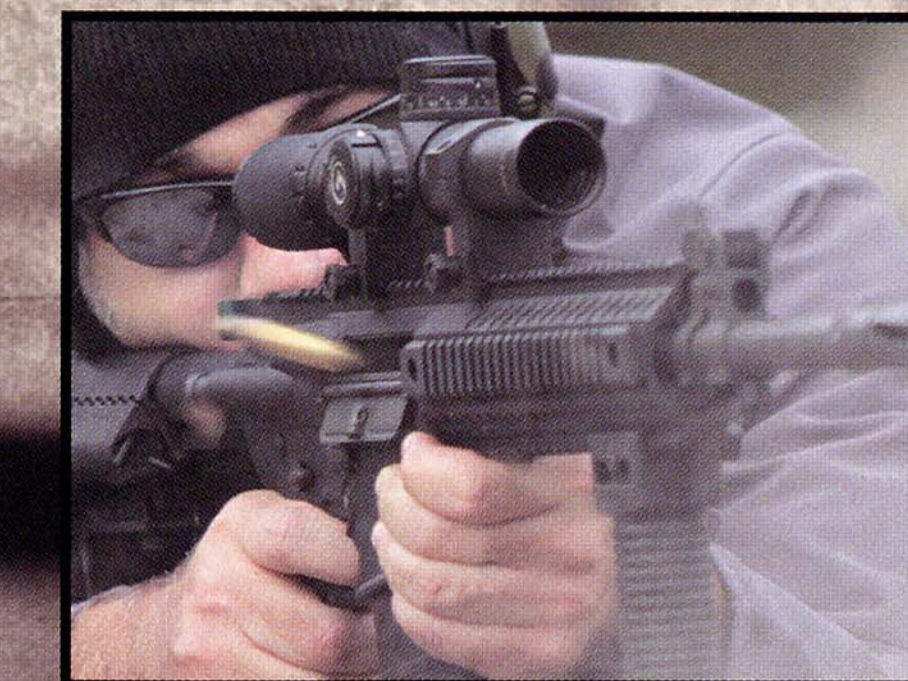
### IAR6940

<b>CALIBER</b>	5.56x45 NATO (.223 Rem.)
<b>WEIGHT</b> (Without Magazine)	9.5 lbs (4.31 kg)
<b>OVERALL LENGTH</b>	33.5 in. (85.09 cm) Stock Retracted 36.75 in. (93.35 cm) Stock Extended
<b>BARREL LENGTH</b>	16.1 in. (40.9 cm)
<b>CYCLIC RATE OF FIRE</b>	700–1,000 rpm
<b>FIRE CONTROL</b>	Safe–Semi–Auto
<b>RIFLING</b>	1/7 RH
<b>EFFECTIVE RANGE</b>	600 m
<b>ADDITIONAL FEATURES</b>	Heavy Barrel
<b>OPTIONAL EQUIPMENT</b>	High Capacity Rotary Magazine

# CM901™

## MULTI-CALIBER WEAPON SYSTEM

Initially developed to exceed the original SCAR requirements of a multi-caliber, single serial number modular weapon system, the Colt CM901 7.62 x 51 NATO (.308 Winchester) has the modularity and versatility you need. Its free-floating barrel and one-piece monolithic upper receiver provide exceptional accuracy. The revolutionary lower receiver and bolt carrier design enable the upper receiver group to be easily swapped out for any Colt MilSpec upper receiver chambered in 5.56 x 45 NATO (.223 Remington), without tools, in under a minute – allowing the weapon to be reconfigured to any situation at a moment's notice. All operating controls are ambidextrous, providing you with flexibility and ease of use.



### SPECS

### CM901

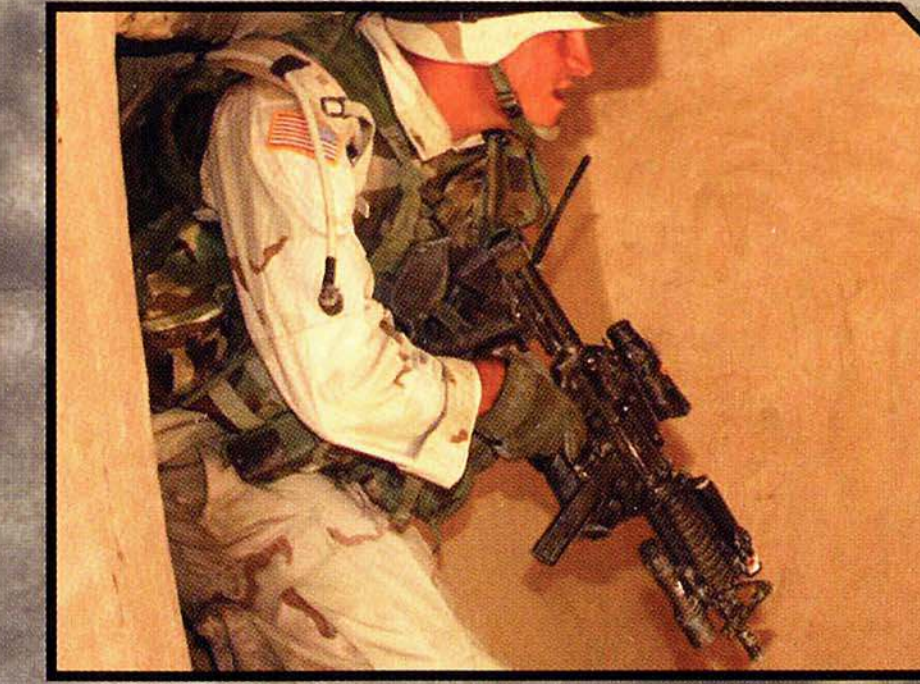
CALIBER	7.62x51 NATO (.308 Win) or 5.56x45 NATO (.223 Rem.)
WEIGHT (Without Magazine)	9.4 lbs. (4.3 kg)
OVERALL LENGTH	34.24" (87 cm) Stock Retracted 37.5" (95.3 cm) Stock Extended
BARREL LENGTH	16.1" (40.89 cm)
CYCLIC RATE OF FIRE	700–950 rpm
FIRE CONTROL	Safe-Semi-Auto
RIFLING	1/12 RH
EFFECTIVE RANGE	700 m
ADDITIONAL FEATURES	Ambidextrous Controls Vltor™ Buttstock Accepts 5.56x45 NATO (.223 Rem) upper receivers with barrel lengths 10.5", 11.5", 14.5", 16.1", 20" with the use of adapter block.

Coming Soon: 5.56x45 NATO (.223 Rem.) upper receiver, including buffer, spring, and adapter block (available separately)

# SMG 9MM SUBMACHINE GUN



Close enemy confrontations demand lightweight, compact, highly concealable, select fire weapons like the Colt 9 mm SMG. The SMG is constructed with a modular rail system that allows the easy mounting of ancillary devices, fires from a closed bolt, and is equipped with a collapsible buttstock, all making it well suited for the military. This straight-line construction, coupled with the low recoil of 9 mm ammunition, provides highly accurate fire with less muzzle climb, especially in full automatic fire. Less recoil also facilitates ease of training and improves accuracy. Finally, operation and training for the Colt 9 mm SMG is similar to that for the Colt M16A2/A4 Rifle, Colt M4 Carbine or Colt Commando Carbine, simplifying user training substantially.



## SPECS

### R0991

### R0992

	R0991	R0992
<b>CALIBER</b>	9x19mm/Parabellum	9x19mm/Parabellum
<b>WEIGHT</b> (Without Magazine)	6.7 lbs (3.04 kg)	6.7 lbs (3.04 kg)
<b>OVERALL LENGTH</b>	26 in. (66.04 cm) Stock Retracted 29.25 in. (74.3 cm) Stock Extended	26 in. (66.04 cm) Stock Retracted 29.25 in. (74.3 cm) Stock Extended
<b>BARREL LENGTH</b>	10.5 in. (26.67 cm)	10.5 in. (26.67 cm)
<b>CYCLIC RATE OF FIRE</b>	700–1,000 rpm	700–1,000 rpm
<b>FIRE CONTROL</b>	Safe-Semi-Auto	Safe-Semi-Burst
<b>RIFLING</b>	1/10 RH	1/10 RH
<b>EFFECTIVE RANGE</b>	100 m	100 m

# M16A4

Setting the standard by which all other weapons in this class are judged, the Colt M16A4 is the fourth generation of the M16 series weapon system. With a removable carrying handle and an integral rail mounting system for optics and other ancillary devices, it is the ultimate full-length combat rifle in 5.56 mm caliber for the 21st century military soldier.



Shown with optional rail accessories and back up iron sight

## SPECS

### R0945/R0905

### R0901

CALIBER	5.56x45 NATO (.223 Rem.)	5.56x45 NATO (.223 Rem.)
WEIGHT (Without Magazine)	7.18 lbs (3.26 kg)	7.18 lbs (3.26 kg)
OVERALL LENGTH	39.5 in. (100.33 cm)	39.5 in. (100.33 cm)
BARREL LENGTH	20 in. (50.8 cm)	20 in. (50.8 cm)
CYCLIC RATE OF FIRE	700–950 rpm	700–950 rpm
FIRE CONTROL	Safe-Semi-Burst	Safe-Semi-Auto
RIFLING	1/7 RH	1/7 RH
EFFECTIVE RANGE	600 m	600 m

NSN 1005-01-383-2872



# M203 40MM GRENADE LAUNCHER

Colt's military experience is on full display with the M203 Grenade Launcher. This single-shot, breech-loaded 40 mm weapon is specifically designed to attach to the M4 Carbine and M16A2 and A4 Rifles. By creating a versatile combination weapon system, the M203 gives you the capability of firing both 5.56 mm rifle ammunition as well as the complete range of 40 mm high-explosive and special-purpose ammunitions. Though attached to the M16A2/A4, the M203 grenade launcher can be operated as a completely independent weapon using its complete self-cocking fire mechanism, barrel latch, trigger and positive safety lever included in the receiver. An essential tool for every modern army, the M203 provides Colt M4 Carbines and Colt M16A2/A4 Rifles with breaching, defilade and area engagement capabilities.



## SPECS

**R0801** FOR USE WITH M16

**R0810** FOR USE WITH M4

**R0811** FOR USE WITH M4

**R0810008** FOR USE WITH ACC-M

**AMMUNITION** FOR ALL M203 VARIANTS

**CALIBER**  
**WEIGHT**  
**METHOD OF OPERATION**  
**BARREL LENGTH**  
**EFFECTIVE RANGE**  
**ADDITIONAL FEATURES**

40 mm  
2.5 lbs (1.13 kg)  
Single Shot / Breech Load  
12" (30.48 cm)  
400 m

40 mm  
2.5 lbs (1.13 kg)  
Single Shot / Breech Load  
12" (30.48 cm)  
400 m

40 mm  
2.5 lbs (1.13 kg)  
Single Shot / Breech Load  
9" (22.86 cm)  
400 m

40 mm  
2.5 lbs (1.13 kg)  
Single Shot / Breech Load  
12" (30.48 cm)  
400 m  
Includes rail mounted  
Leaf & Quadrant Sights

M406 HIGH EXPLOSIVE (HE)  
M433 HE ARMOR PIERCING  
M576 BUCKSHOT  
M407 & M781 PRACTICE

Most other specialized  
40 mm Low Velocity Ammunition  
including Less Lethal Ammunition

# CONVERSION KITS

# FUTURE VISION

## SIMPLE AND COST-EFFECTIVE

The Colt conversion kit is the most valuable method of replacing existing older model M16 service weapons with the most advanced carbine in the world. The conversion kit is compatible with any variant of the M16 family of weapons, and is available in a variety of barrel lengths with folding or fixed front sights and collapsible buttstock.

Out of the 165 individual parts in the M4 Carbine, 120 of the old parts are replaced brand new. This conversion kit upgrade solution provides the operator with a weapon conforming to the strictest U.S. Government Military Standards not available by other manufacturers; a Colt rifle converted to the most state-of-the-art configuration.

- Various Barrel Lengths
- Available in piston or gas impingement
- Various Buttstock Assemblies
- Various Upper Receiver Assemblies
- Various Accessory Options Available

Speak with a Colt Defense sales representative about all options available.



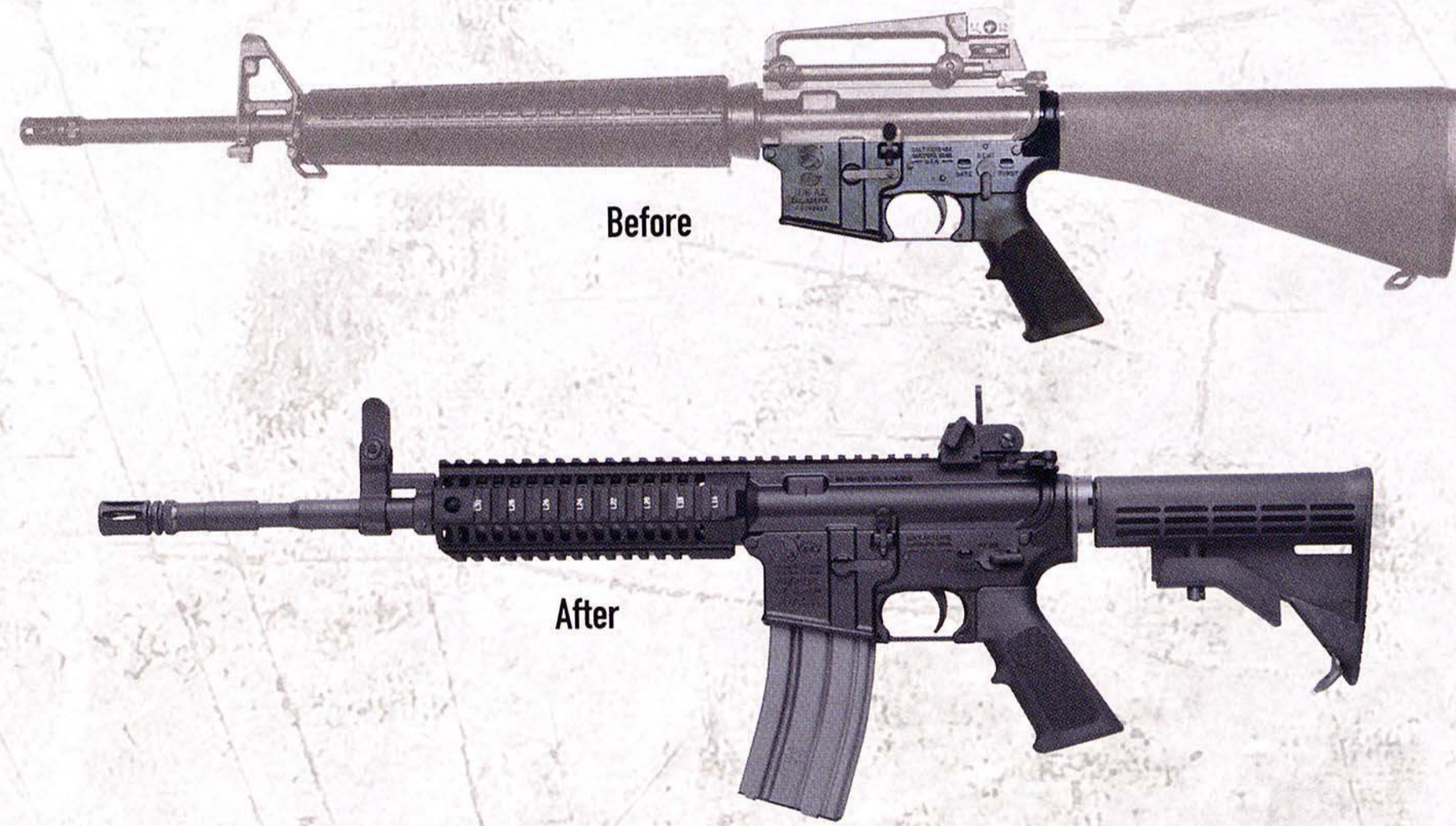
M4 with RAS Upper Assembly and Buttstock Assembly



M4 with Handguards Upper Assembly and Buttstock Assembly

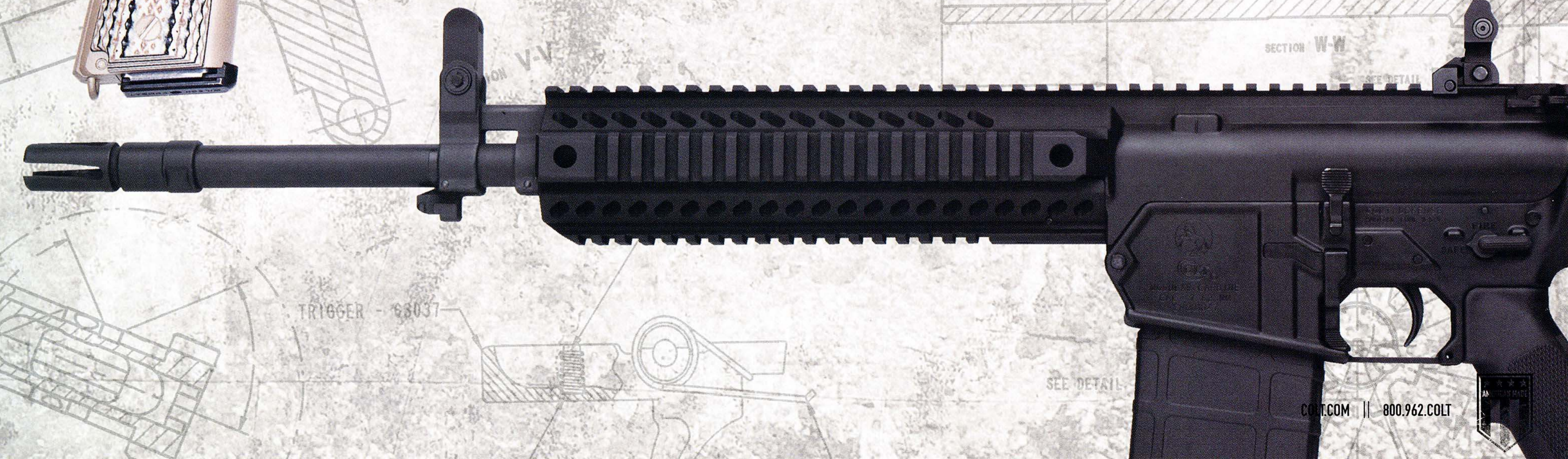


M4 Monolithic Upper Assembly and Buttstock Assembly



Constantly breaking barriers with our sights on the future, Colt continues to lead the way in design, performance and quality. Knowing what is at stake, we accept nothing but perfection from ourselves and zero flaws in our products. Our new product development leads with innovation with rapid prototyping, materials and manufacturing methods. Our ISO 9001:2008 certification ensures constant responsibility in our awareness to our military, law enforcement and international clients. Feared by the enemy and the competition, we mandate only the best quality products are made available to you.

LE901-16S & M45A1 MARSOC 1911 shown



# SIGHTING & ACCESSORIES ARMORER COURSES



The Colt M16/M4 family of weapons provides today's soldiers on the modern battlefield with accuracy, reliability and combat-proven firepower from a 5.56 mm platform. This capability can be drastically enhanced when any of the multitude of after-market accessories are mounted on the weapon. These combat multipliers serve many purposes: sighting devices enhance the one-shot, one-hit probability; visible and IR lasers decrease engagement times and allow for use in low-light or no-light conditions; and grips enhance the user's comfort and weapon manipulation. Most accessories can be quickly mounted and removed in seconds without the use of tools, and several accessories can be maintained in the unit armory and employed as each unique mission dictates. But, Colt doesn't stop at supplying world-class weapon systems to our customers. We also offer information on a full line of accessories to meet your operational needs. One-stop shopping provides the customer with readily available products from sighting systems, to suppressors, to edged weapons.

- Sighting Systems
- Rail Systems
- Magazines & Related Equipment
- Cleaning & Associated Equipment
- Training Aids & Equipment
- Suppression & Flash Eliminators
- Storage Equipment
- Slings
- System Components
- Edged Tools & Weapons
- Miscellaneous Tools & Equipment

If you are unsure of your needs, please contact our sales team directly to help you find the correct solutions to fit your budget and operational requirements.

The course includes the M16 family of weapons and all its variants, including the M4, the AR15 and all its variants and the 9 mm Submachine gun. Course length is 24 class hours over three days with no shooting included.

Course Description: This course covers design, theory, compatibility, disassembly, assembly, maintenance and troubleshooting for the law enforcement, corrections, military and nuclear security armorer. All Colt Certified Training Courses are restricted to qualified active law enforcement, corrections, military and nuclear security personnel.

## RIFLE/CARBINE/SMG ARMORER COURSES





COLT DEFENSE LLC || 547 NEW PARK AVE || WEST HARTFORD, CT 06110 || COLT.COM || 800.962.COLT ||  FACEBOOK.COM/COLTFIREARMS ||  @COLTFIREARMS



**US GOVERNMENT SALES INFORMATION**  
1-860-244-1364

**INTERNATIONAL SALES INFORMATION**  
1-860-244-1392 or 1-860-244-1384

© COLT DEFENSE LLC 2013